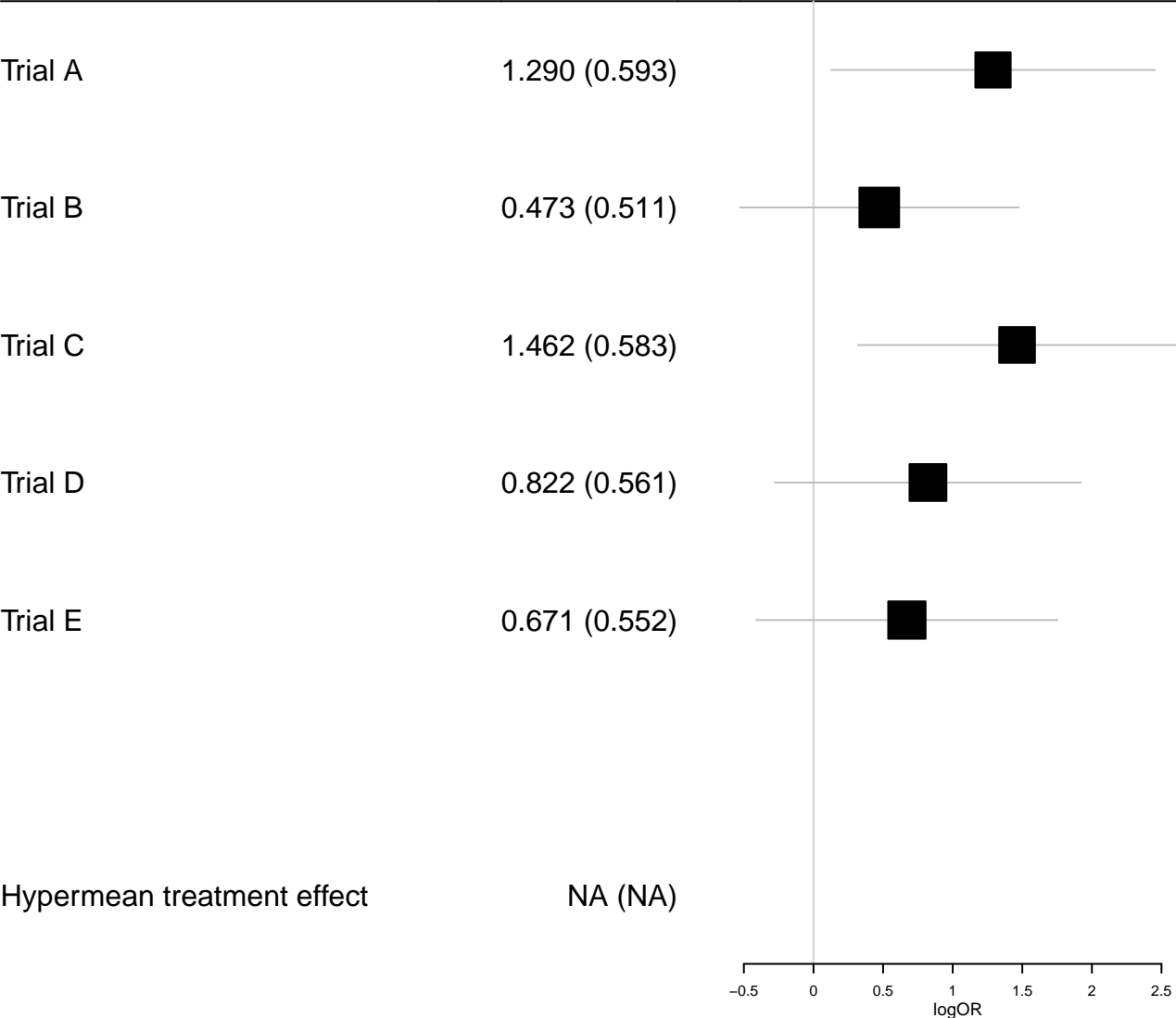




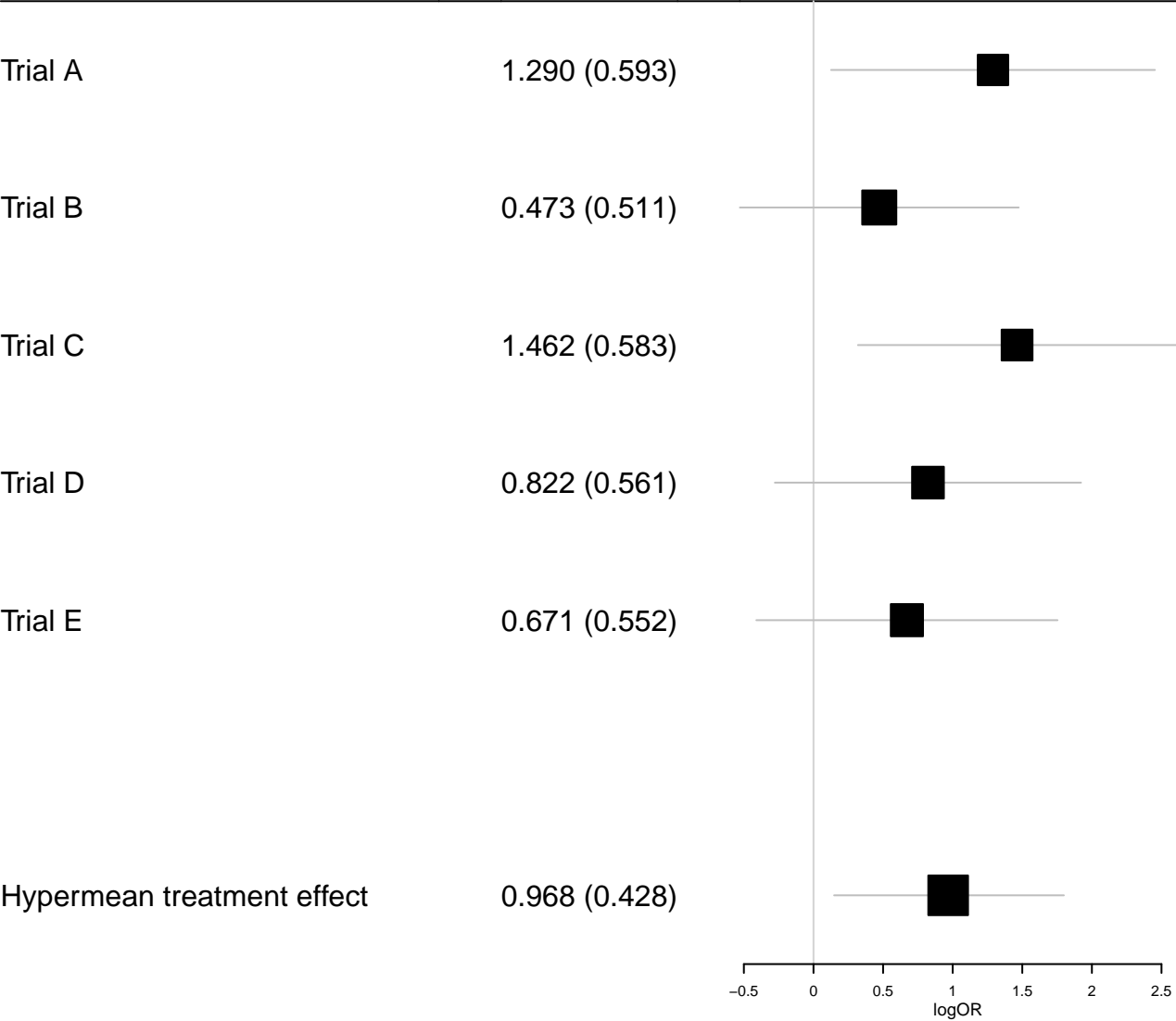
Group mean treatment effect

Mean (SD)



Group mean treatment effect

Mean (SD)



Group mean treatment effect

Mean (SD)

Trial A

1.290 (0.593)

Trial B

0.473 (0.511)

Trial C

1.462 (0.583)

Trial D

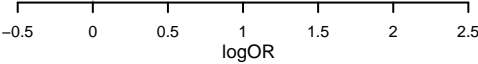
0.822 (0.561)

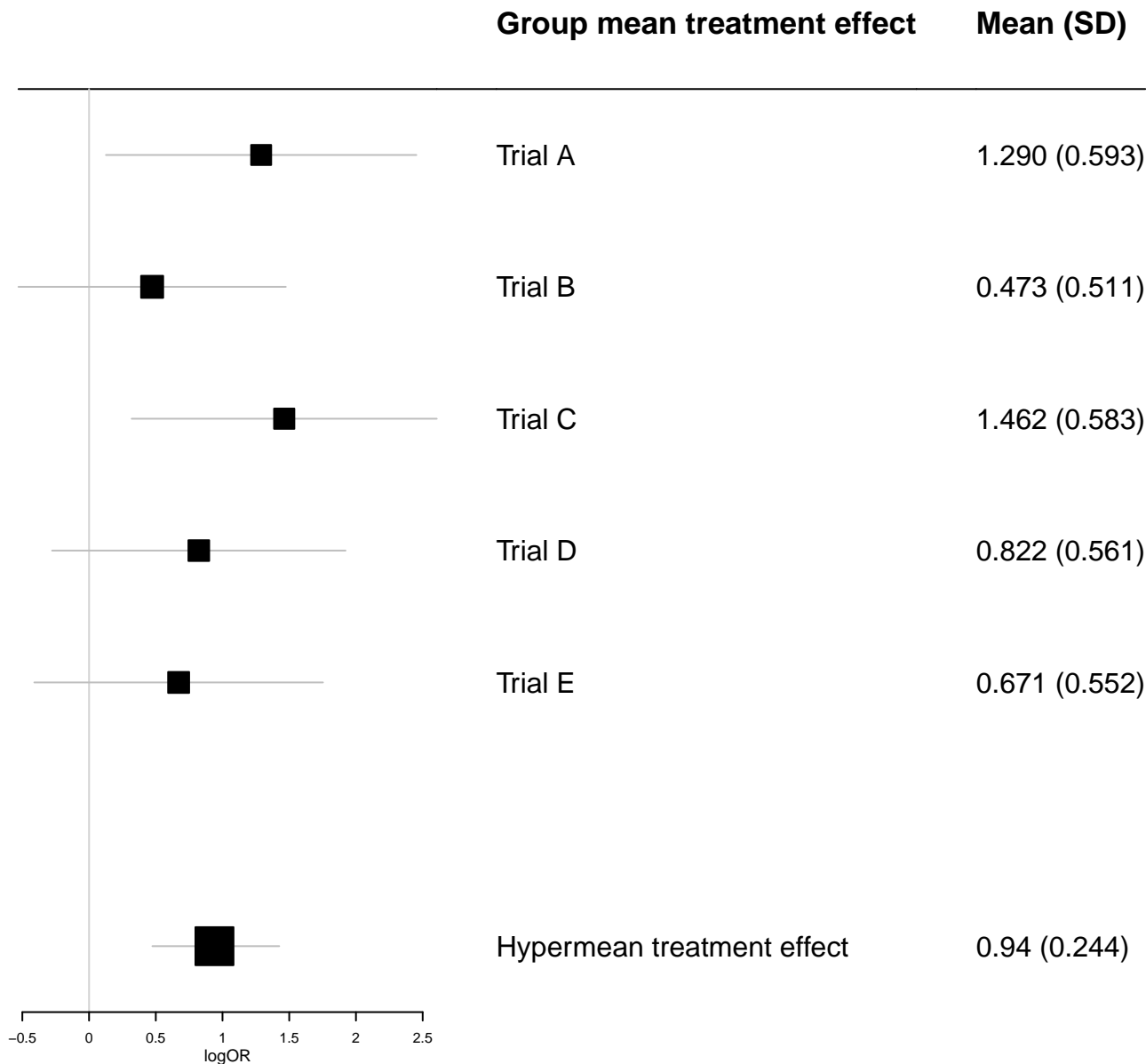
Trial E

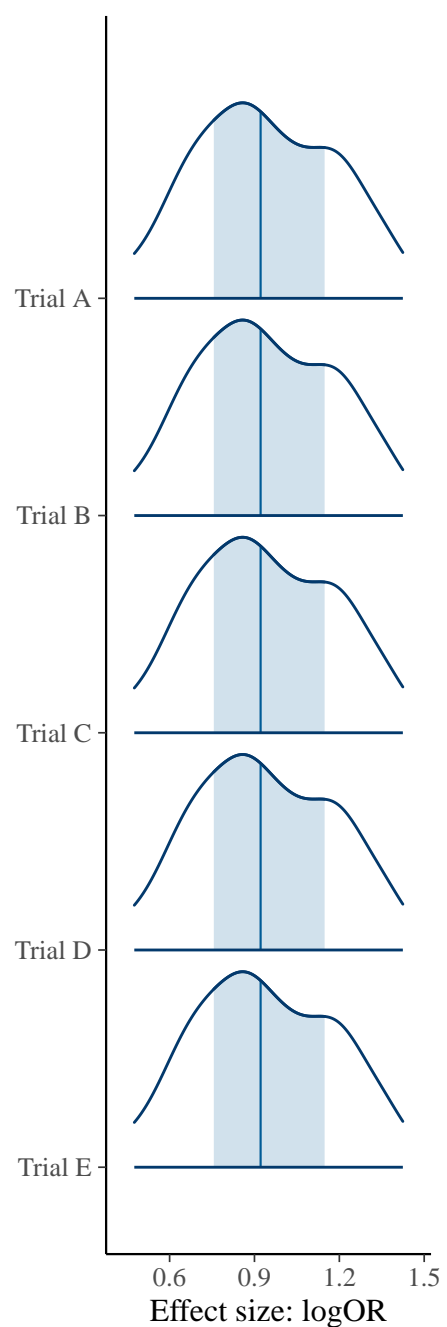
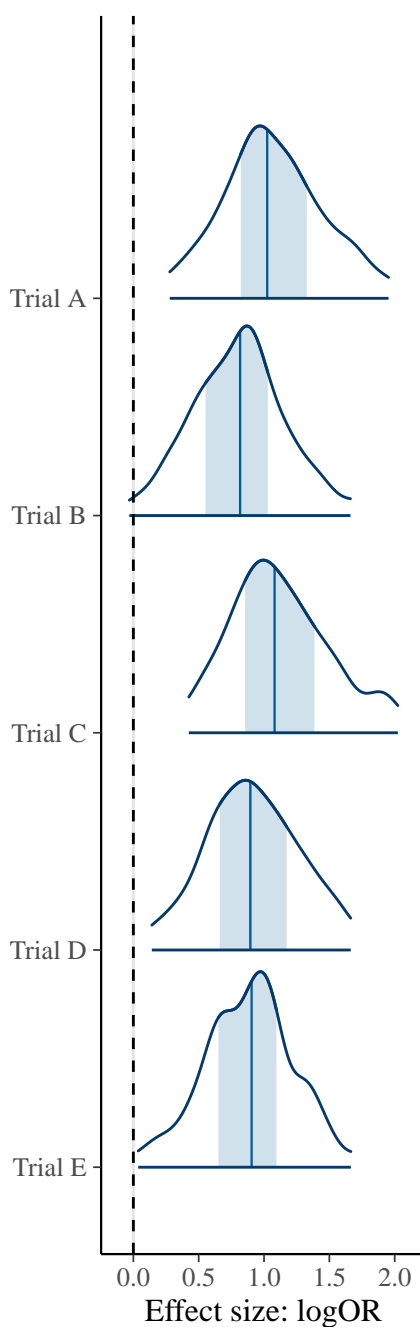
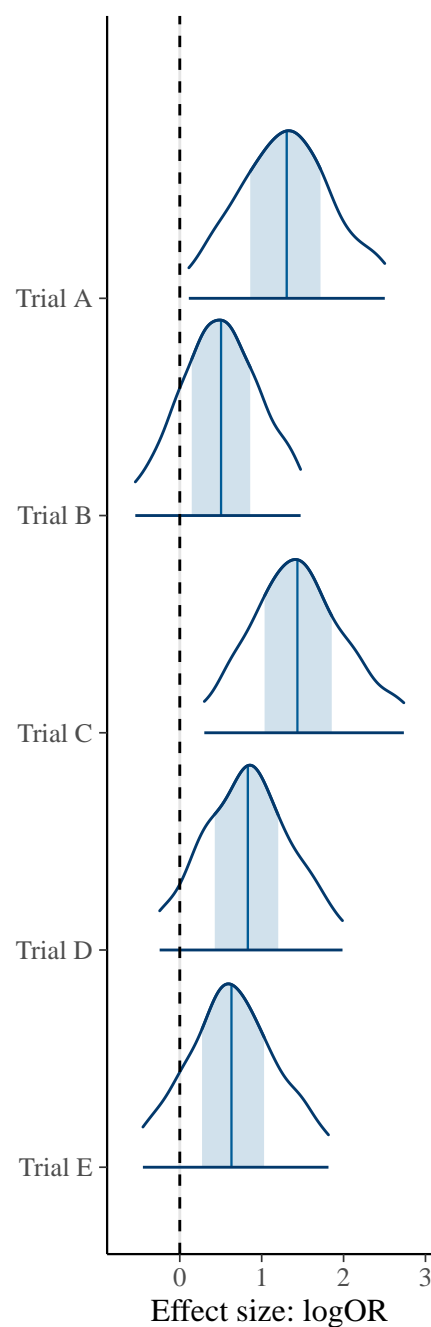
0.671 (0.552)

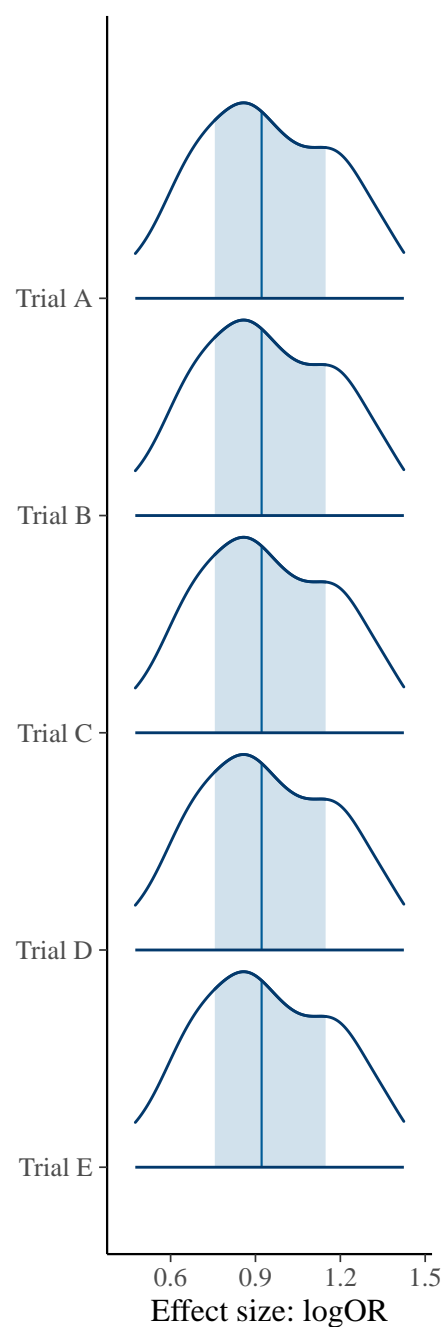
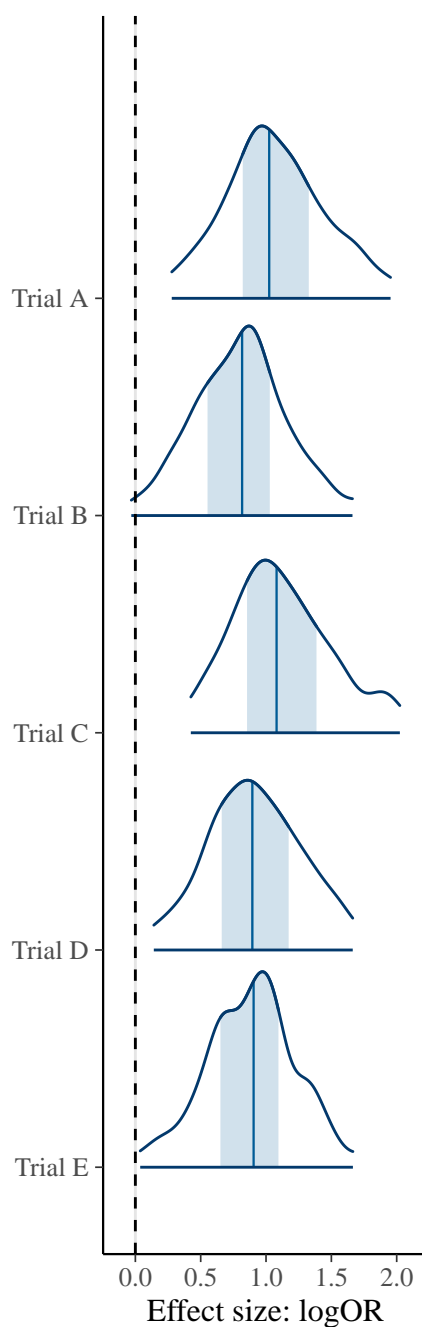
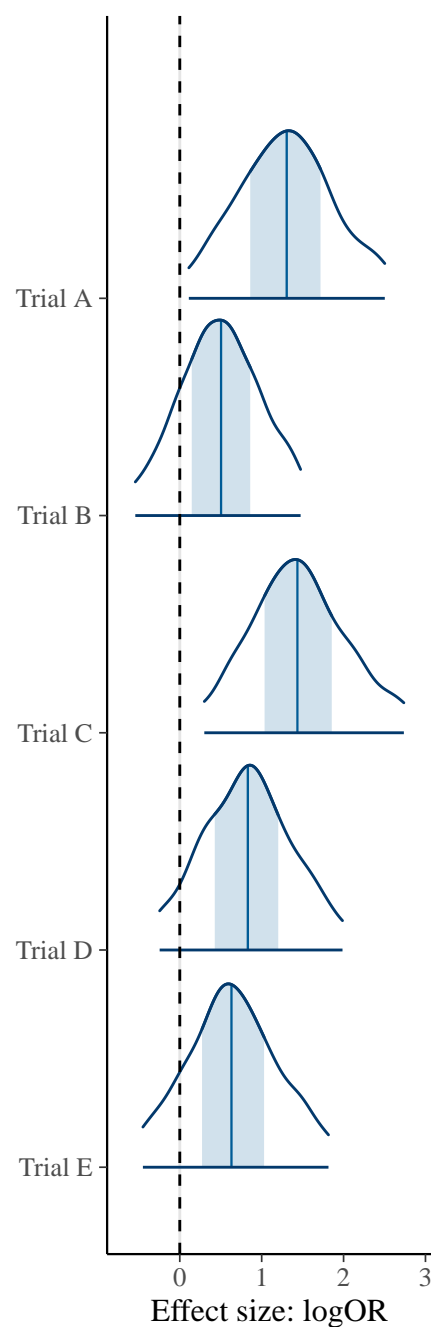
Hypermean treatment effect

0.94 (0.244)



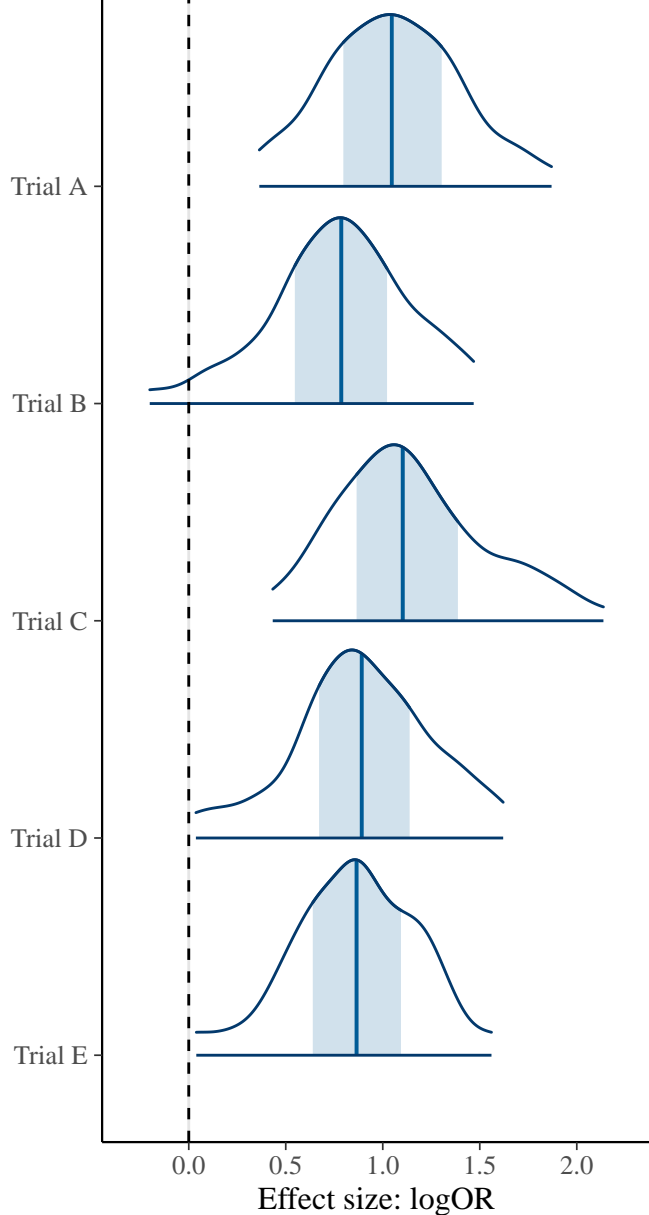
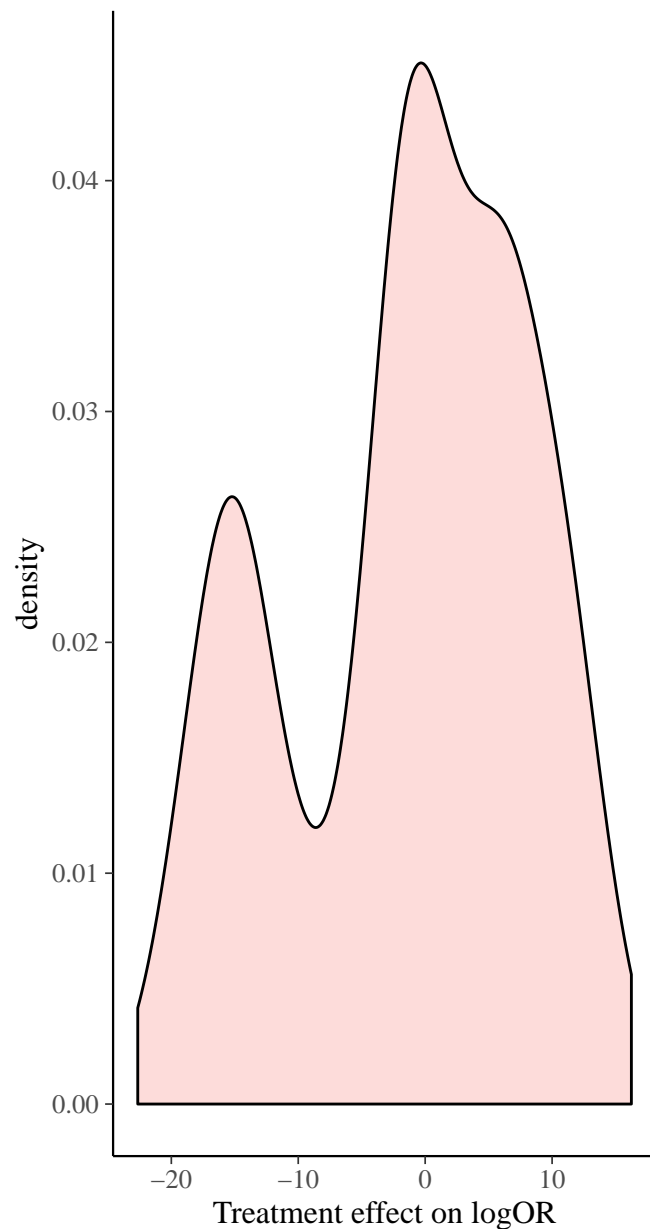






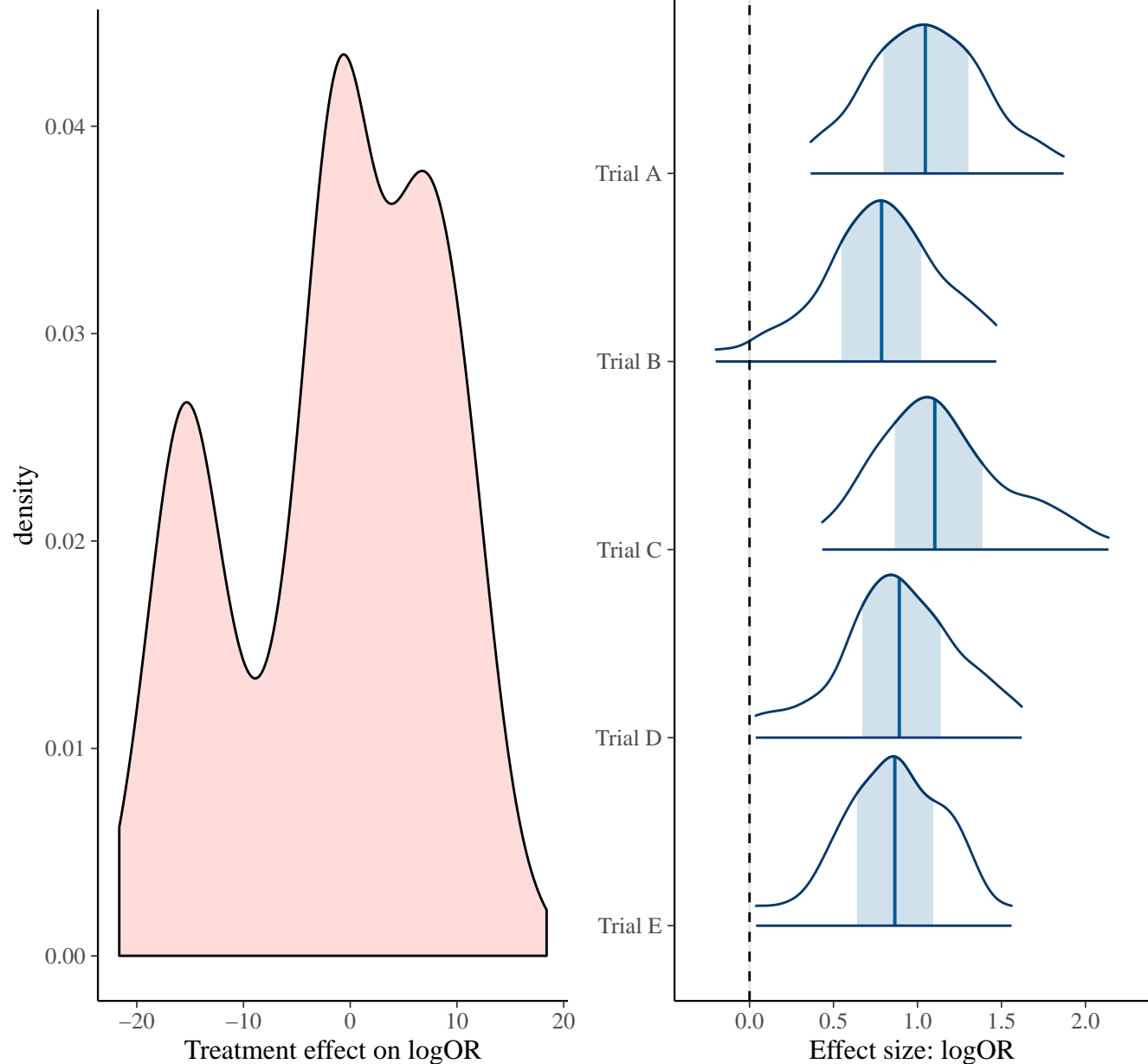
# Prior distribution for possible treatment effect

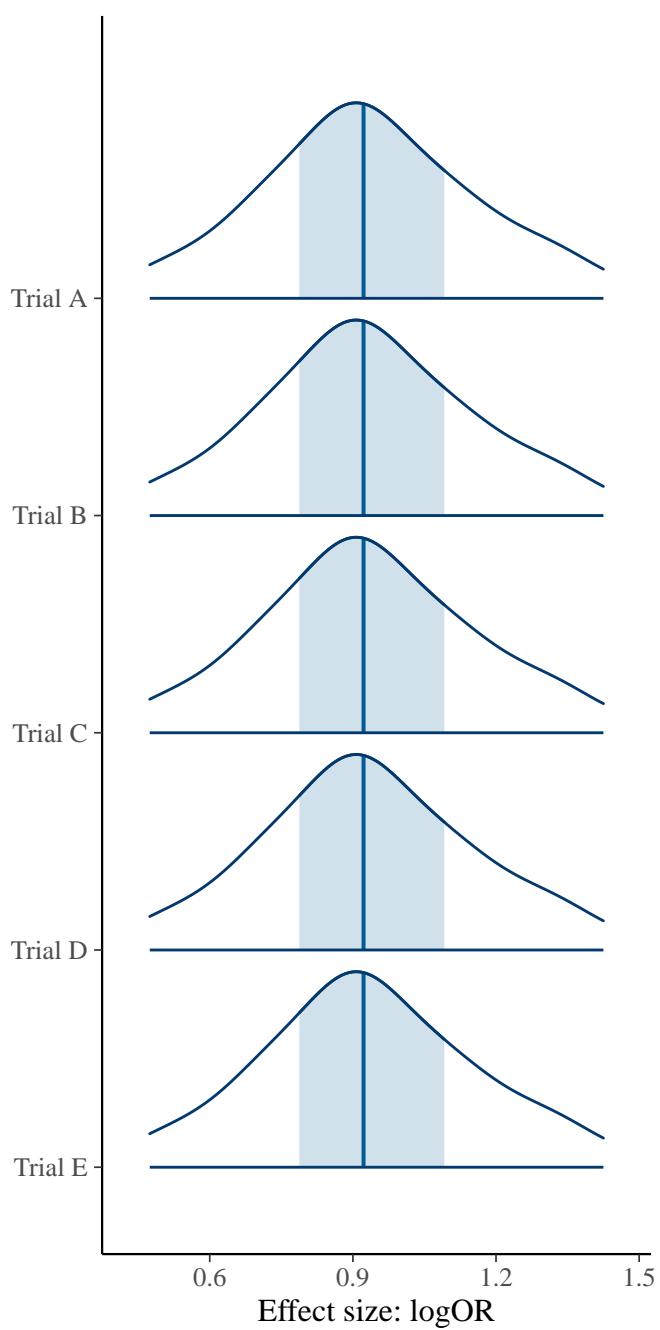
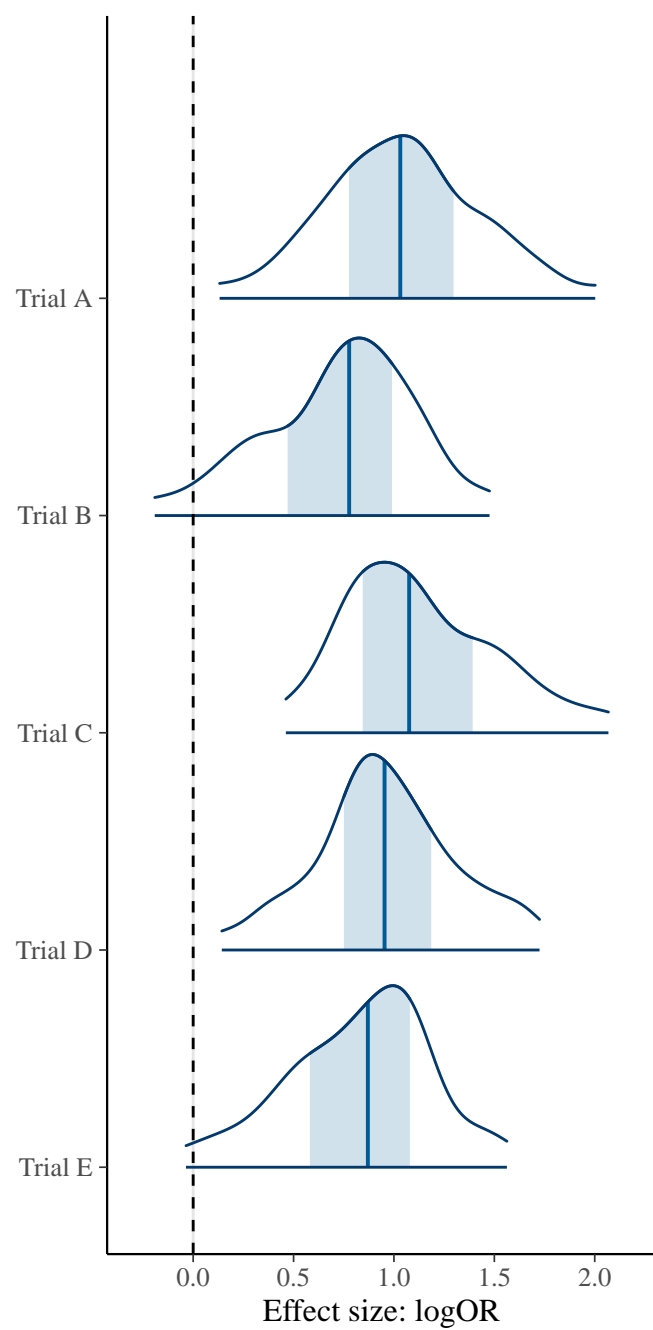
No data, only sampling from prior

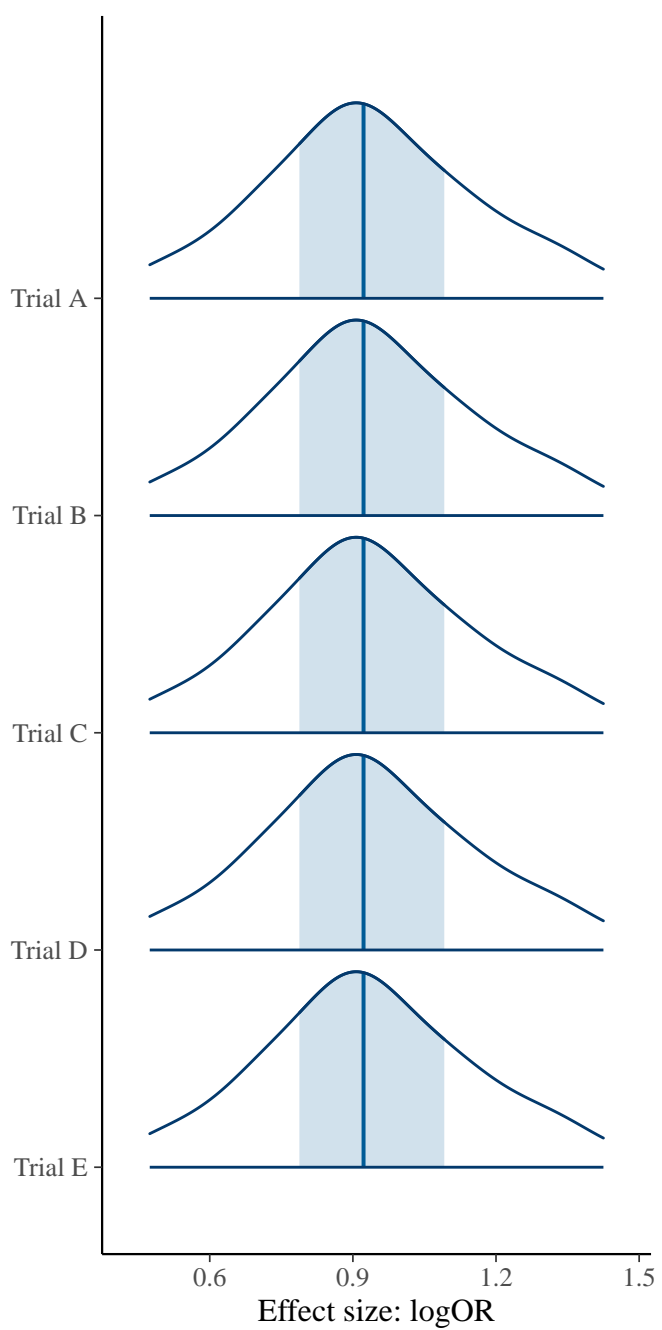
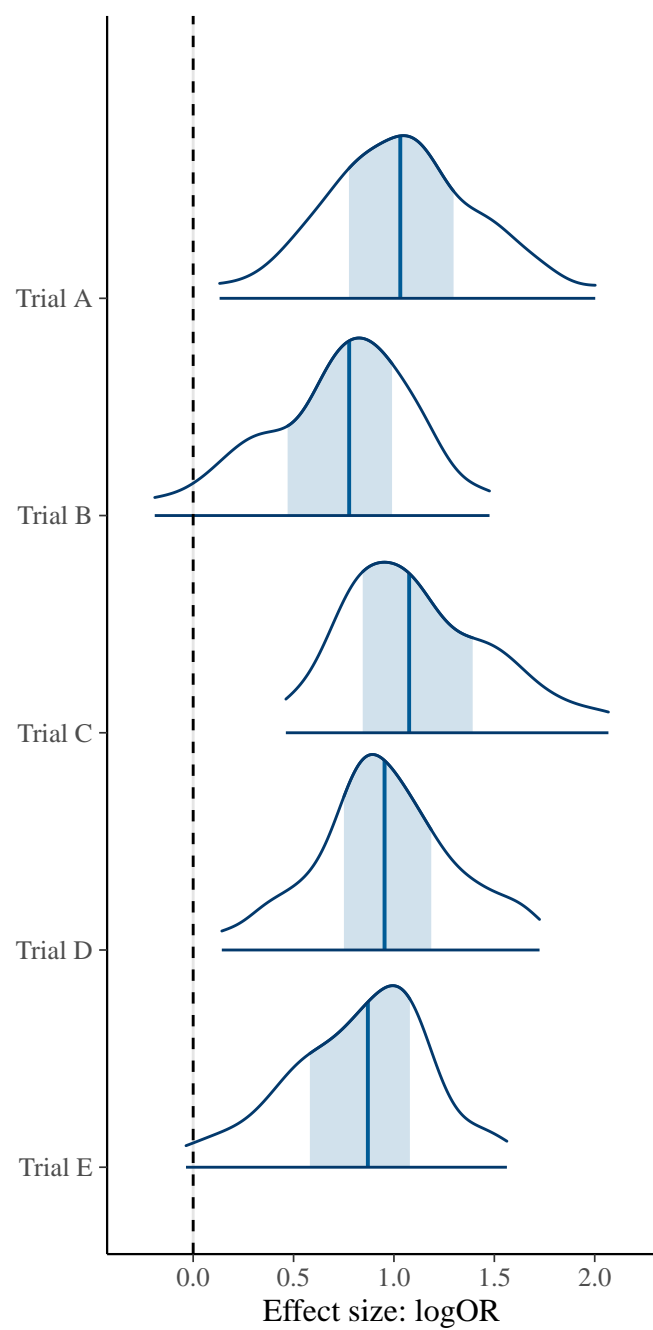


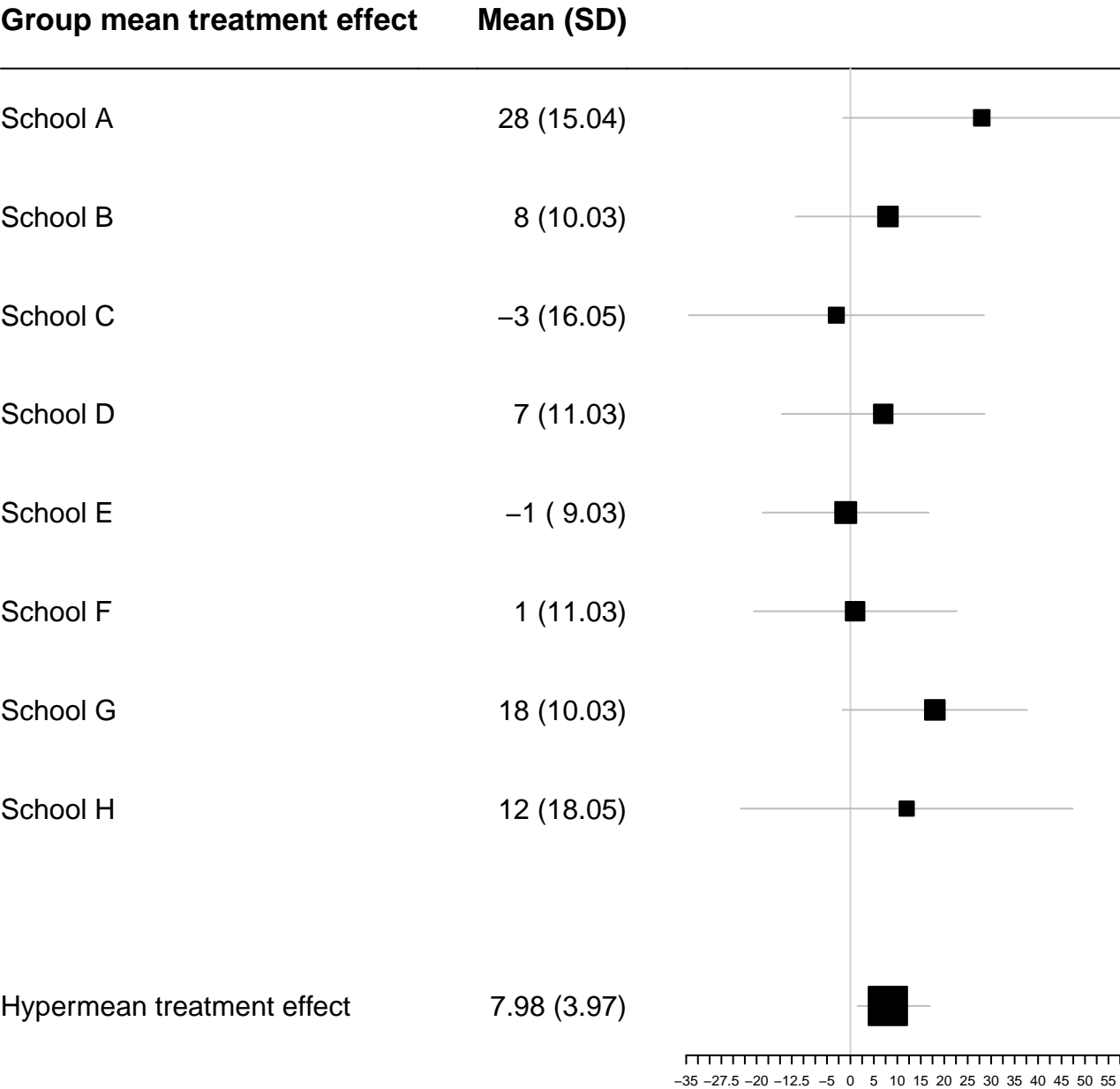
# Prior distribution for possible treatment effect

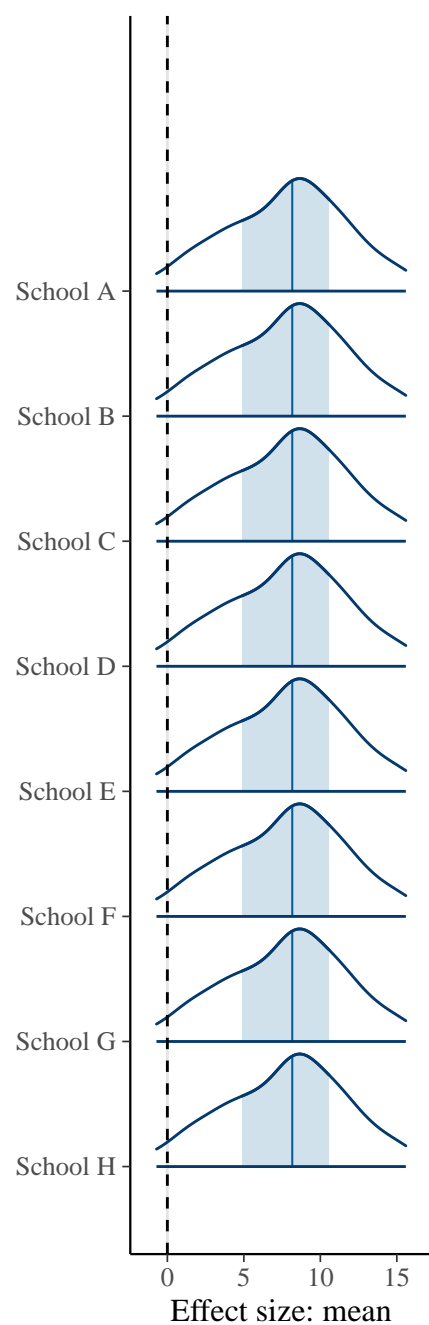
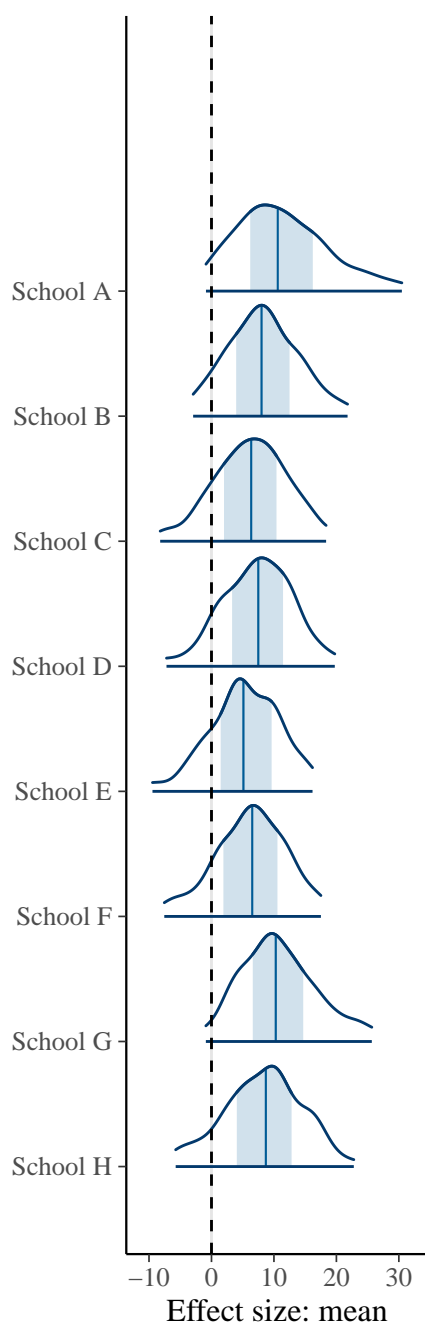
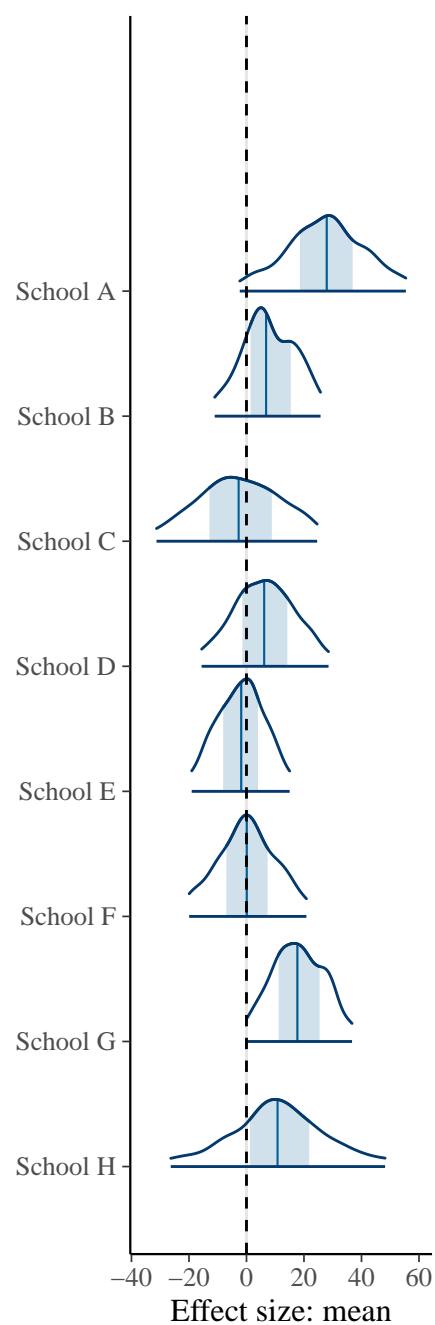
No data, only sampling from prior

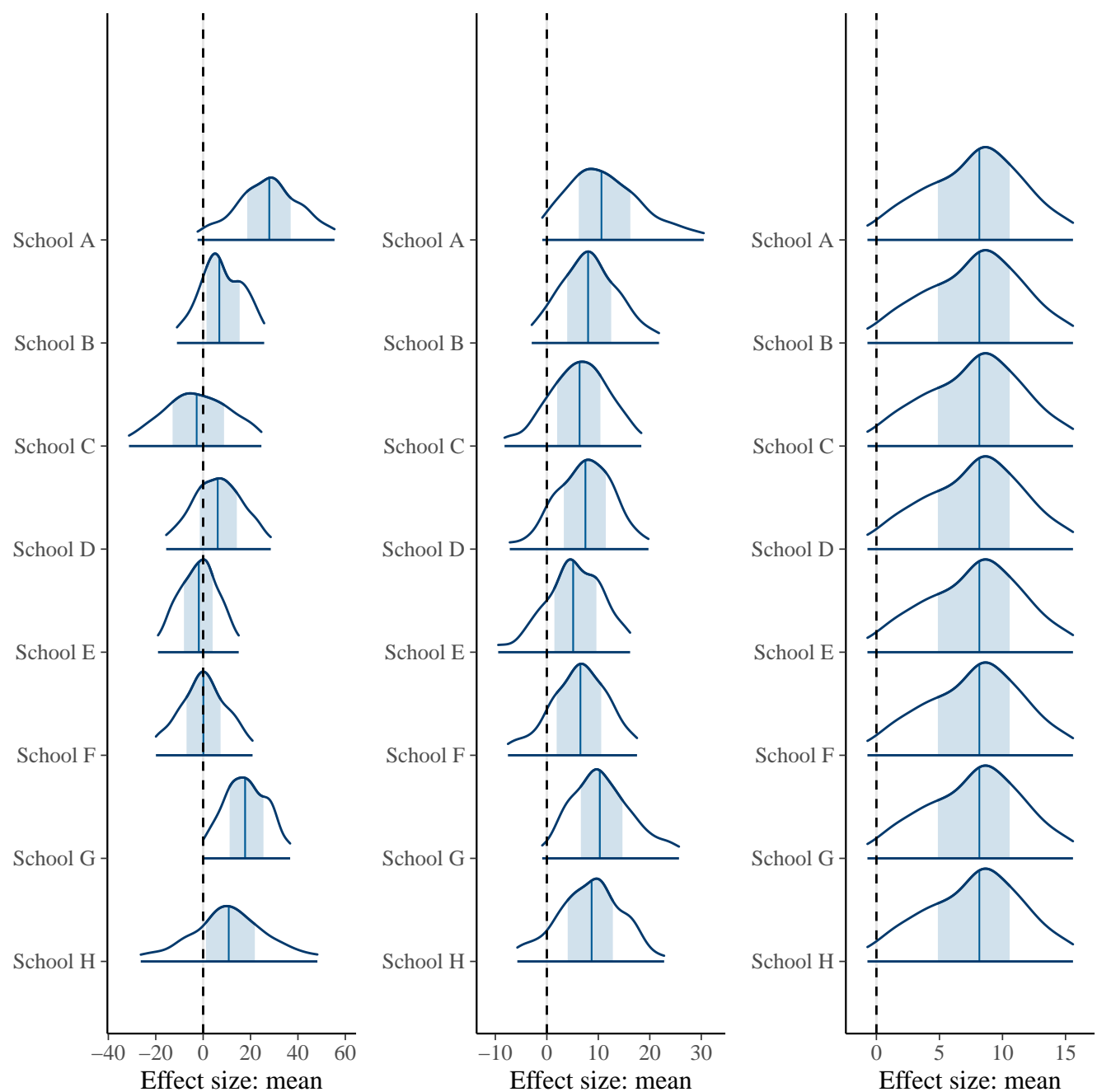






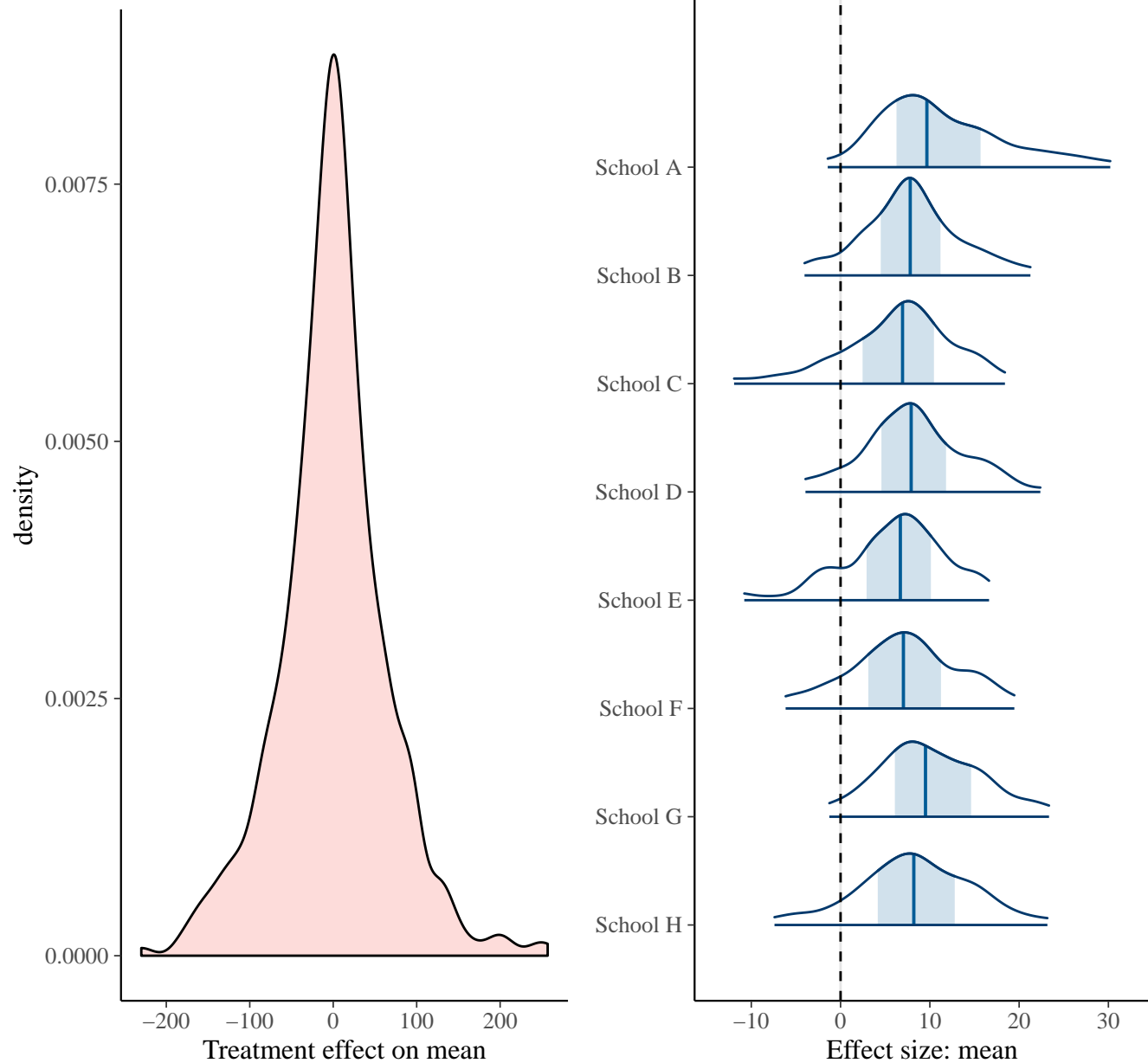






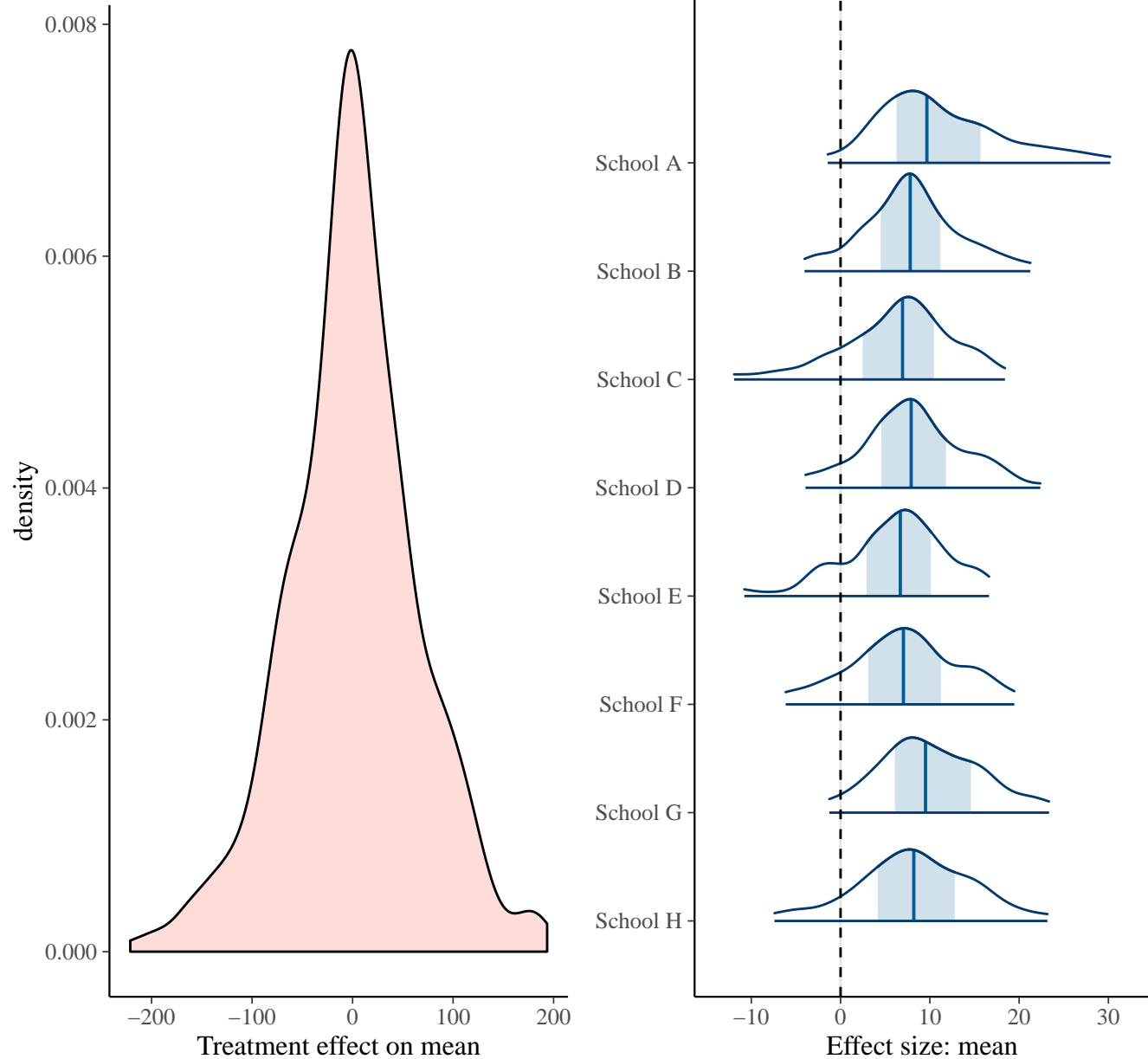
# Prior distribution for possible treatment effect

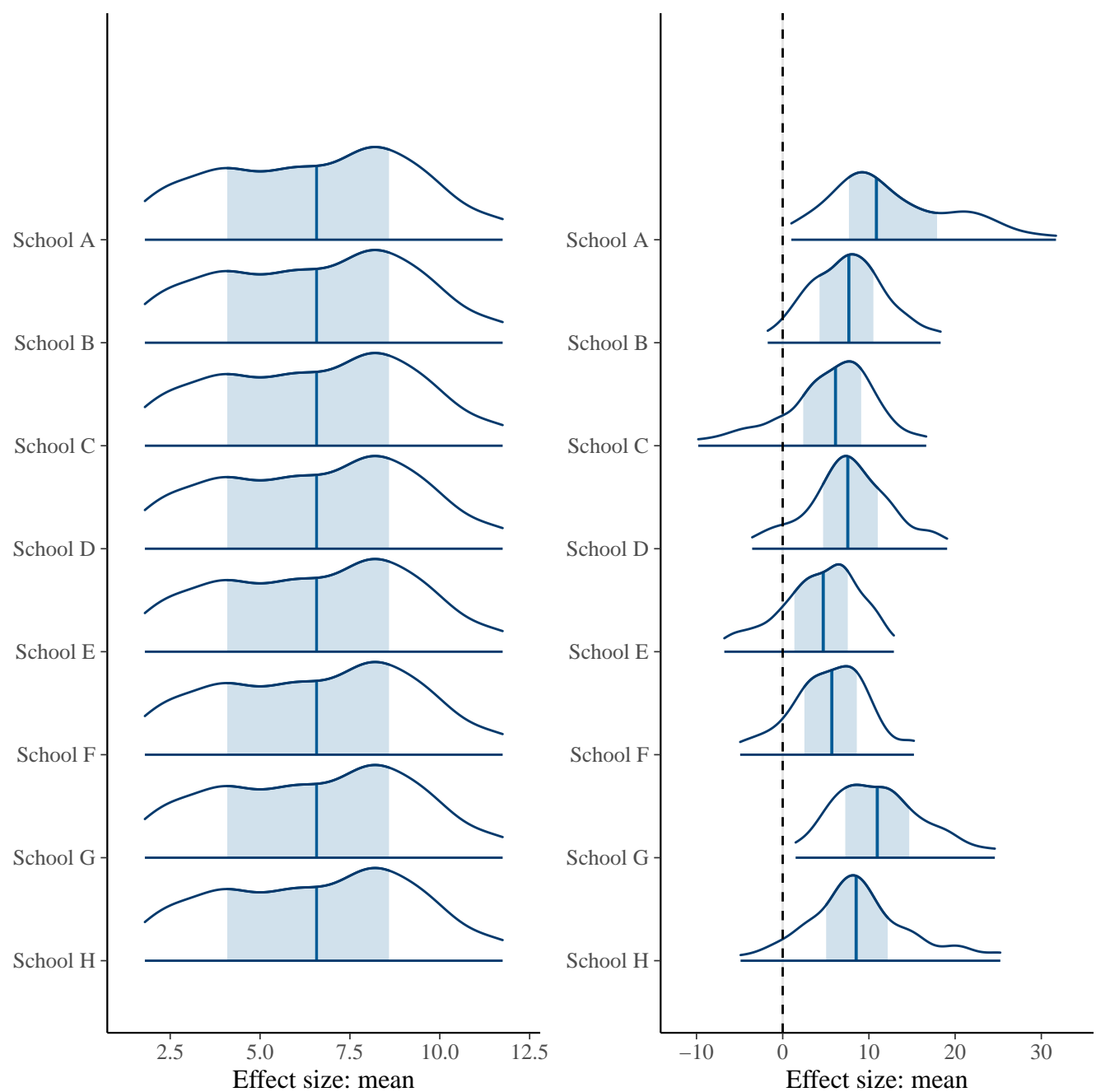
No data, only sampling from prior

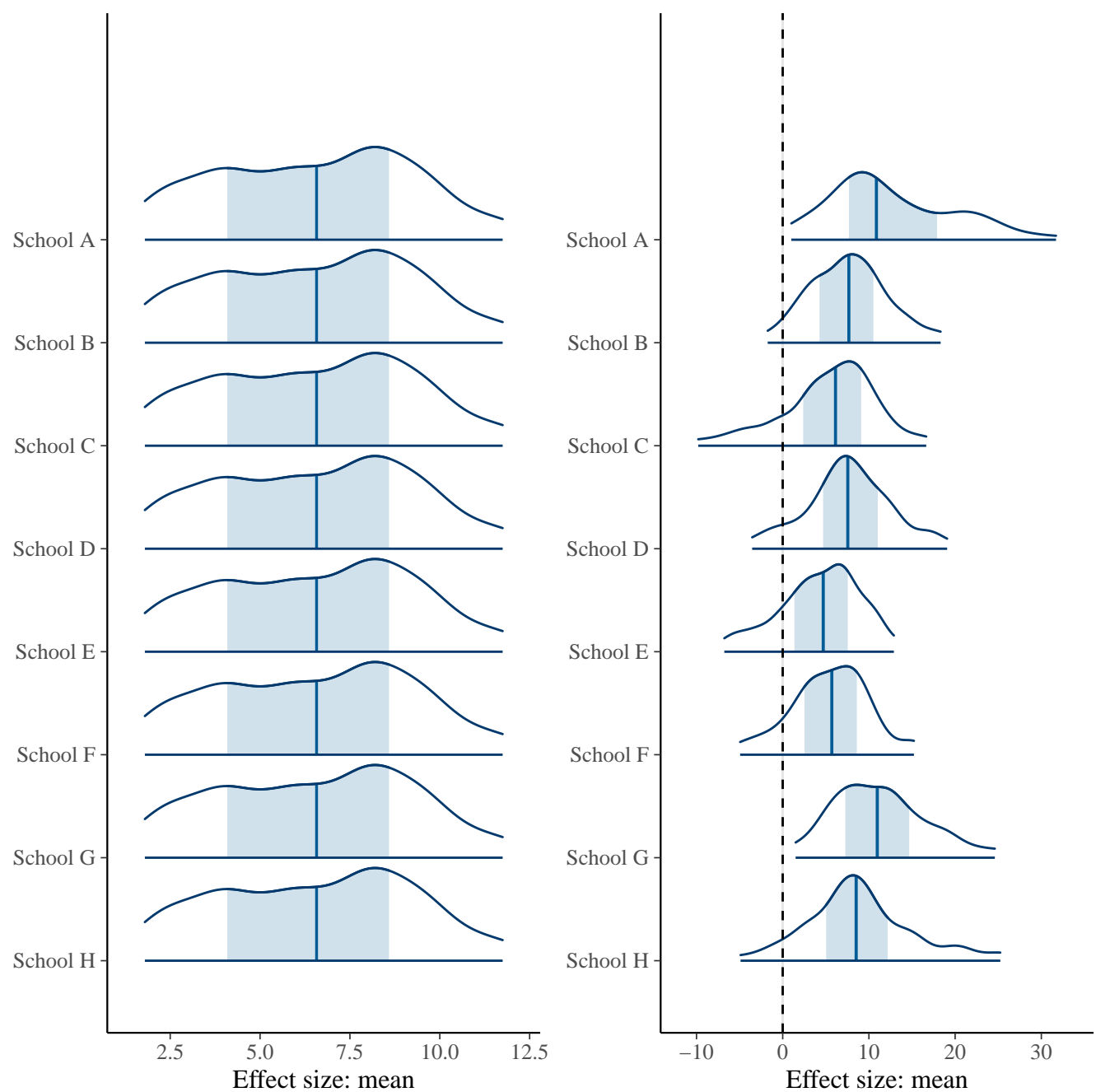


# Prior distribution for possible treatment effect

No data, only sampling from prior

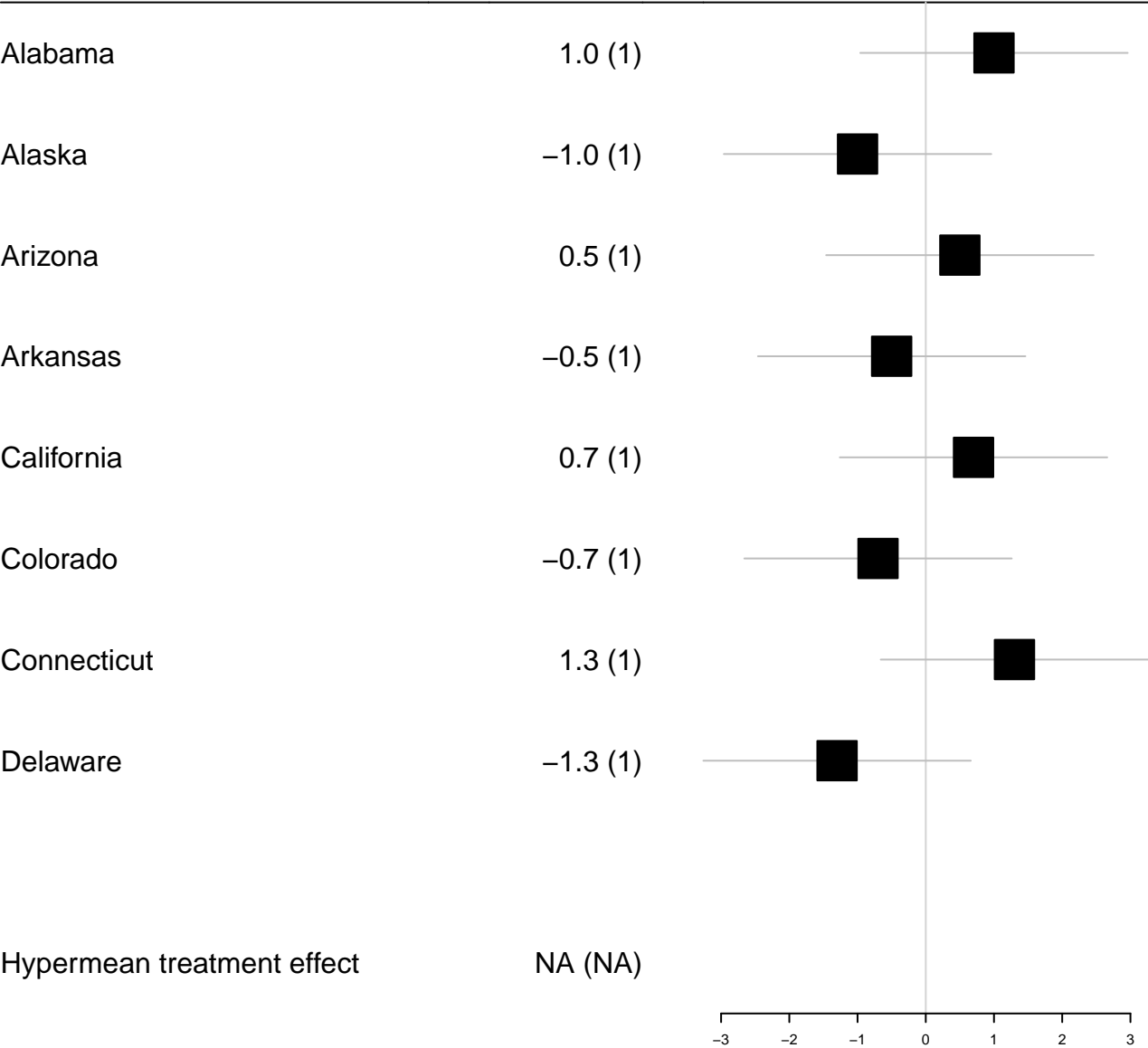


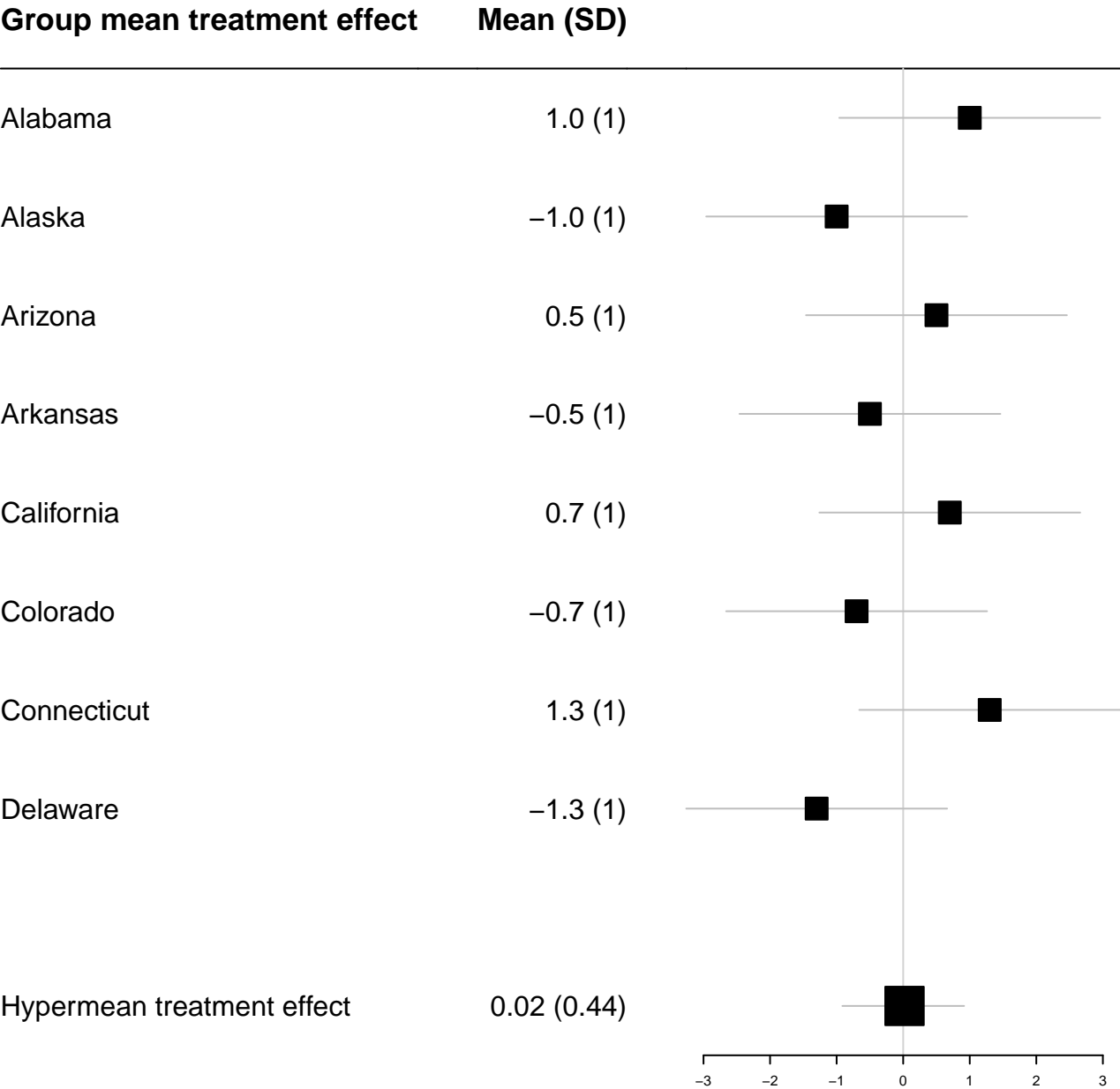


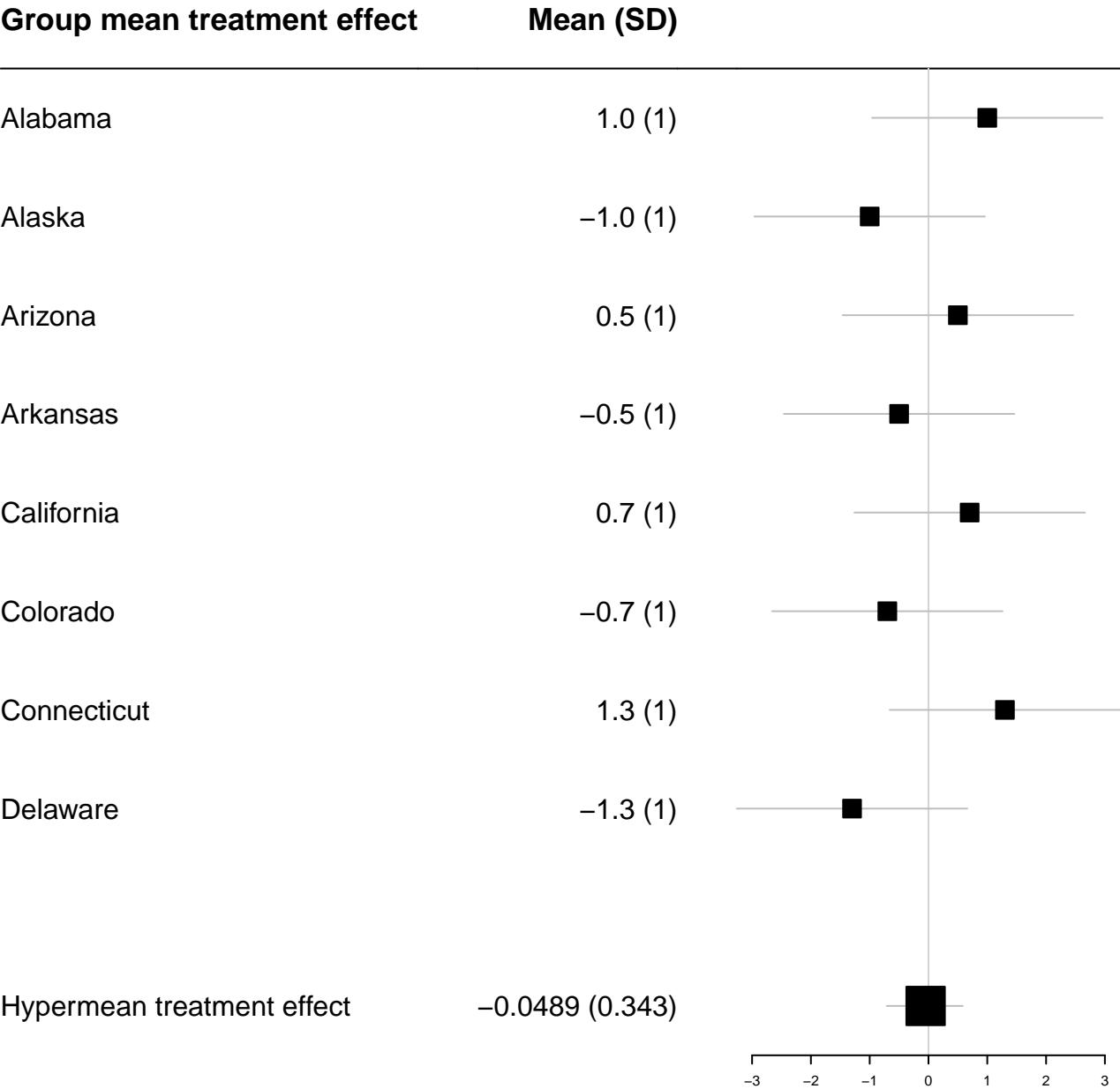


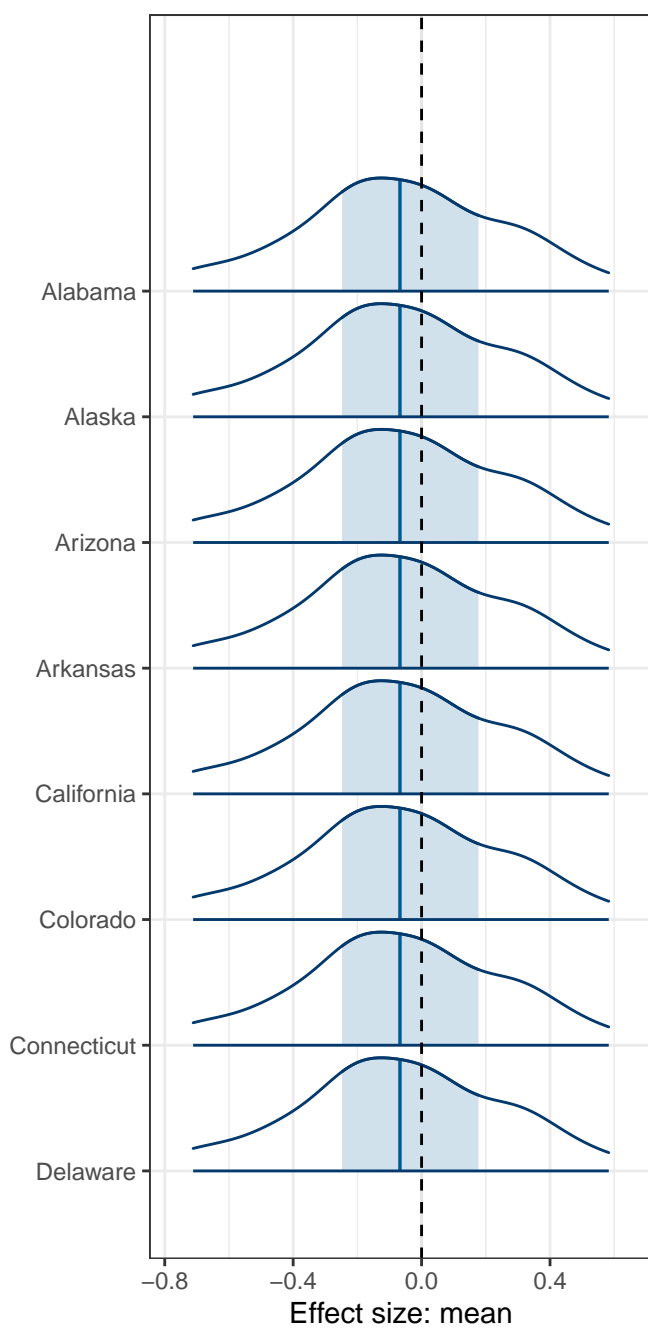
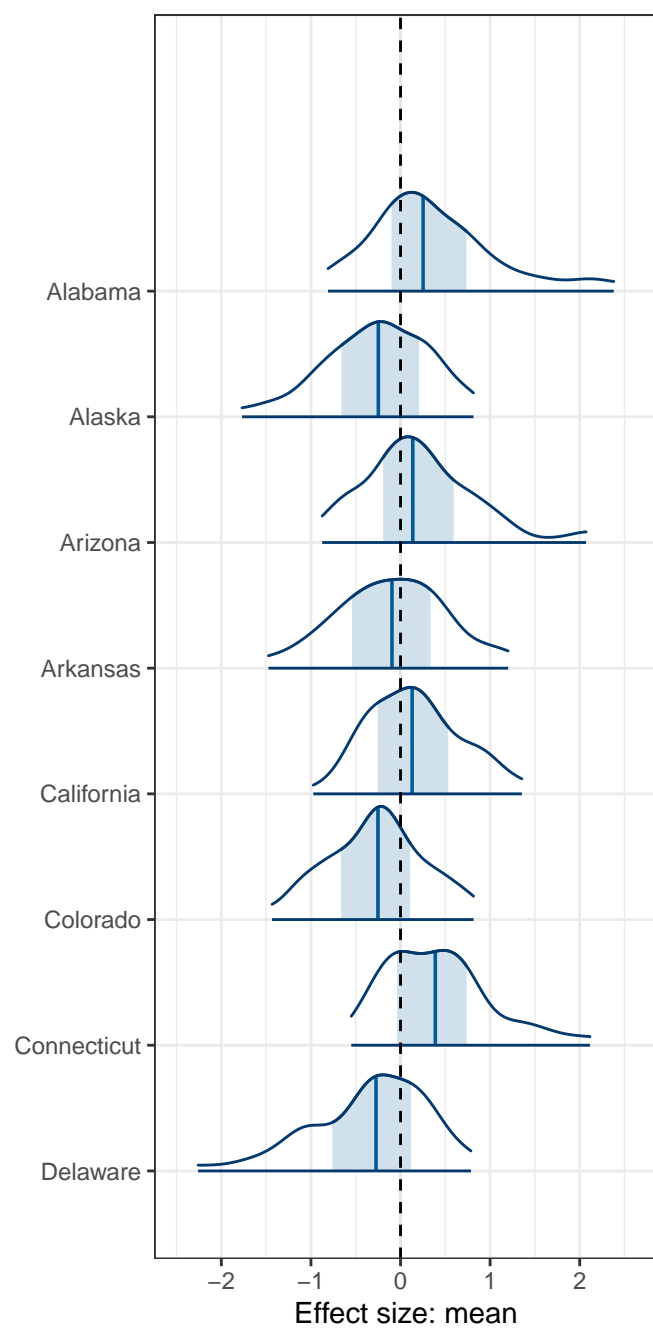
Group mean treatment effect

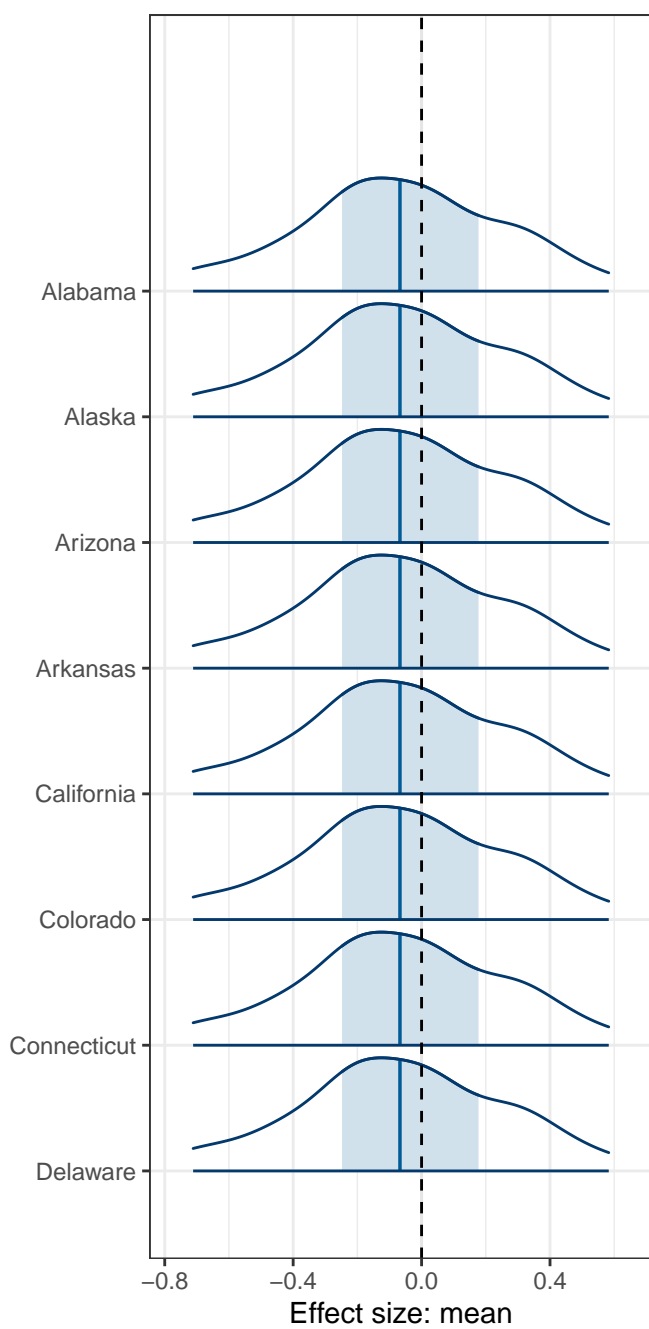
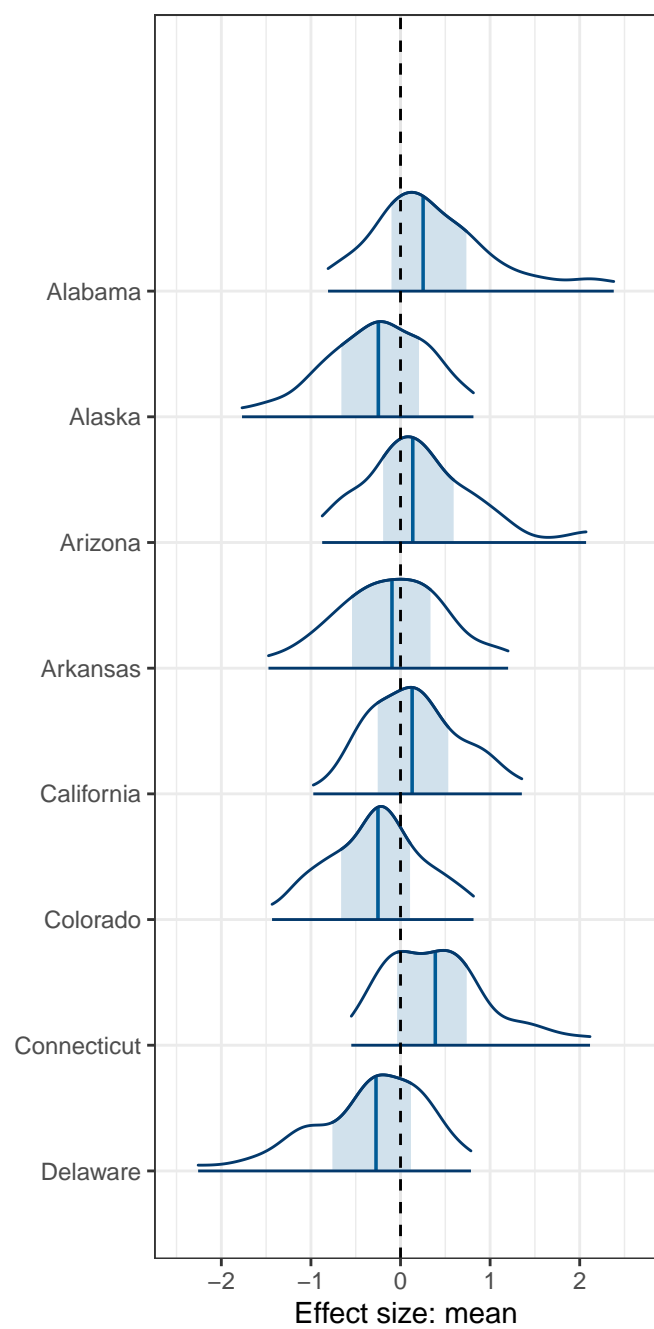
Mean (SD)





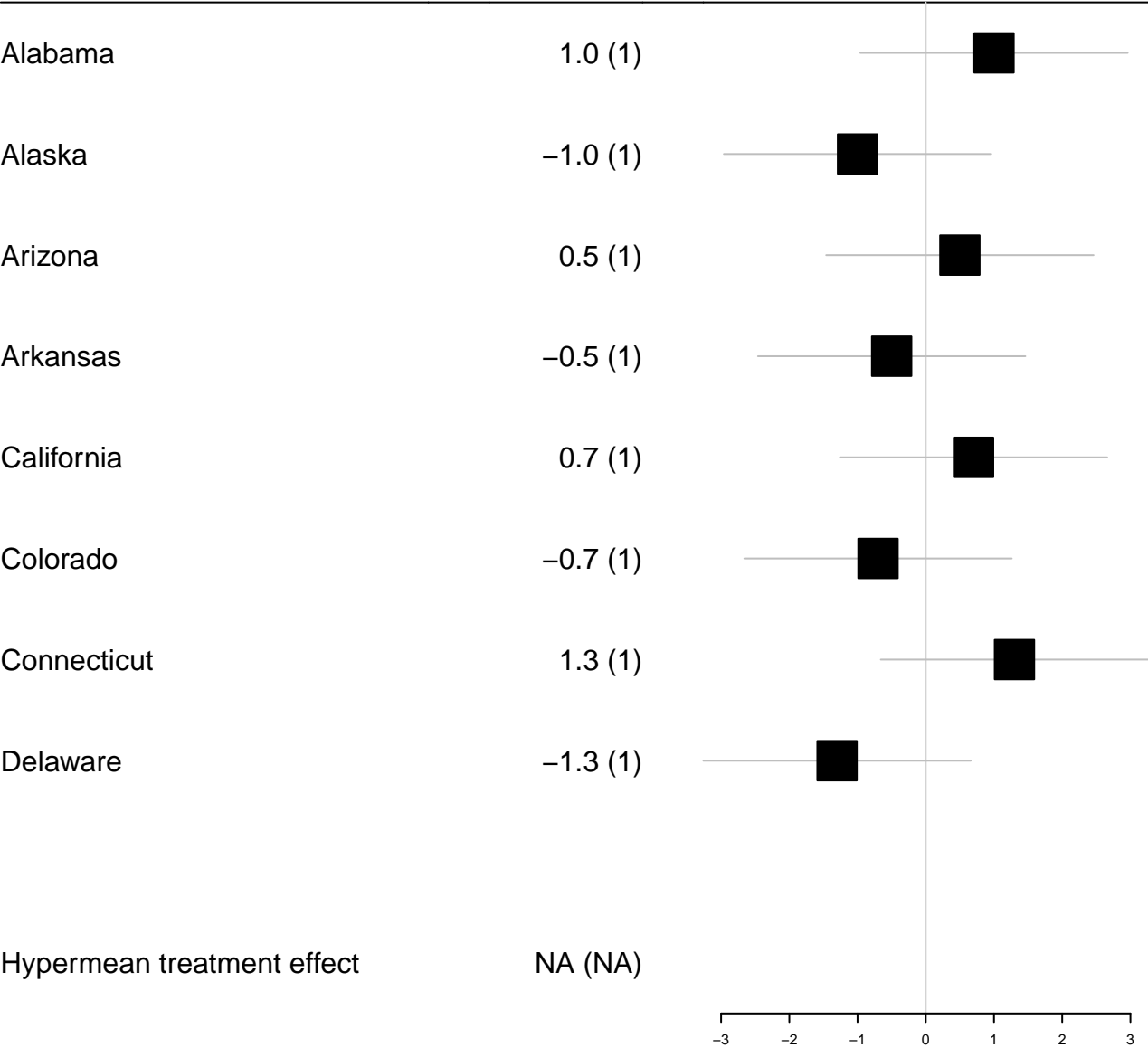


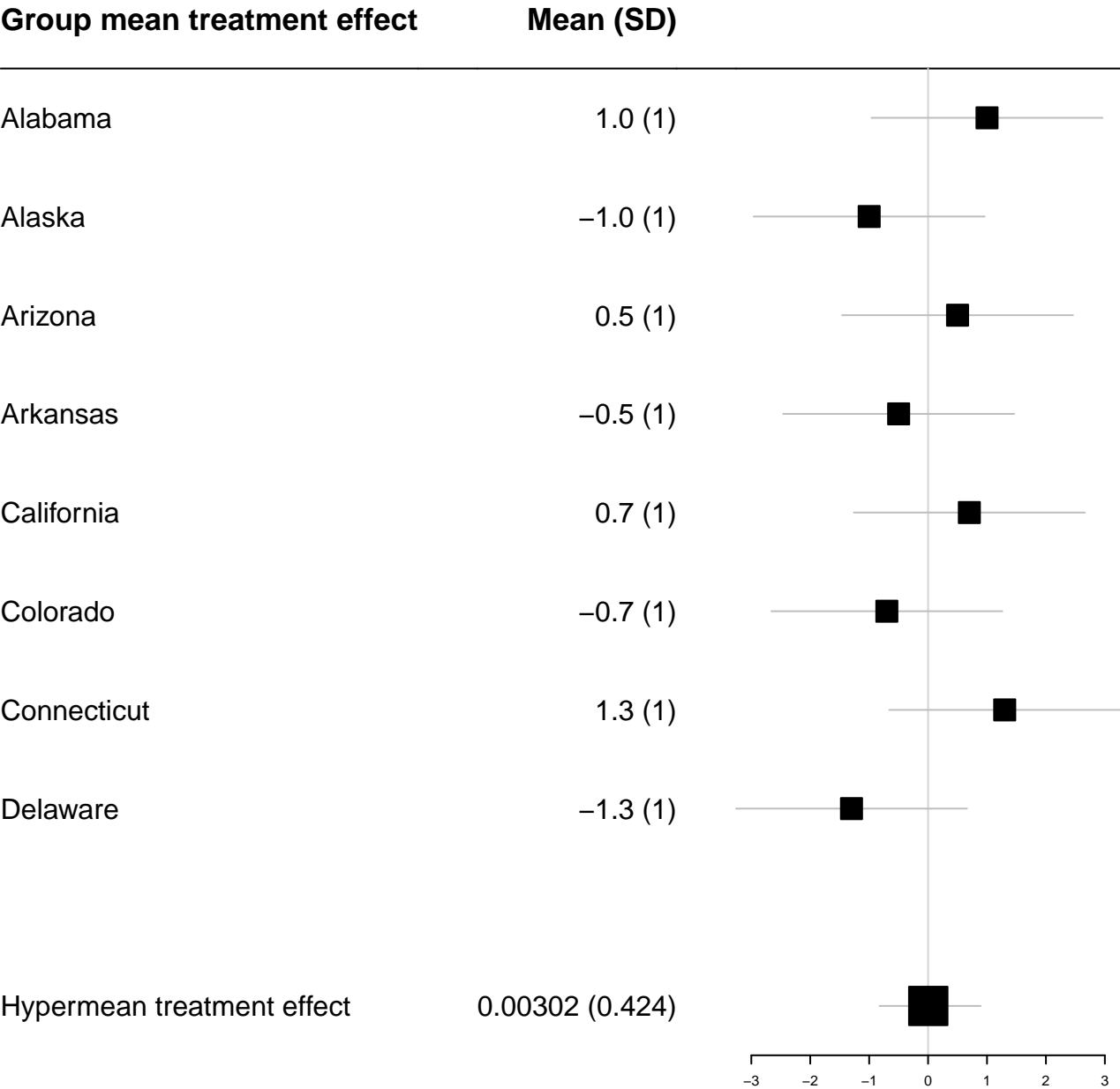


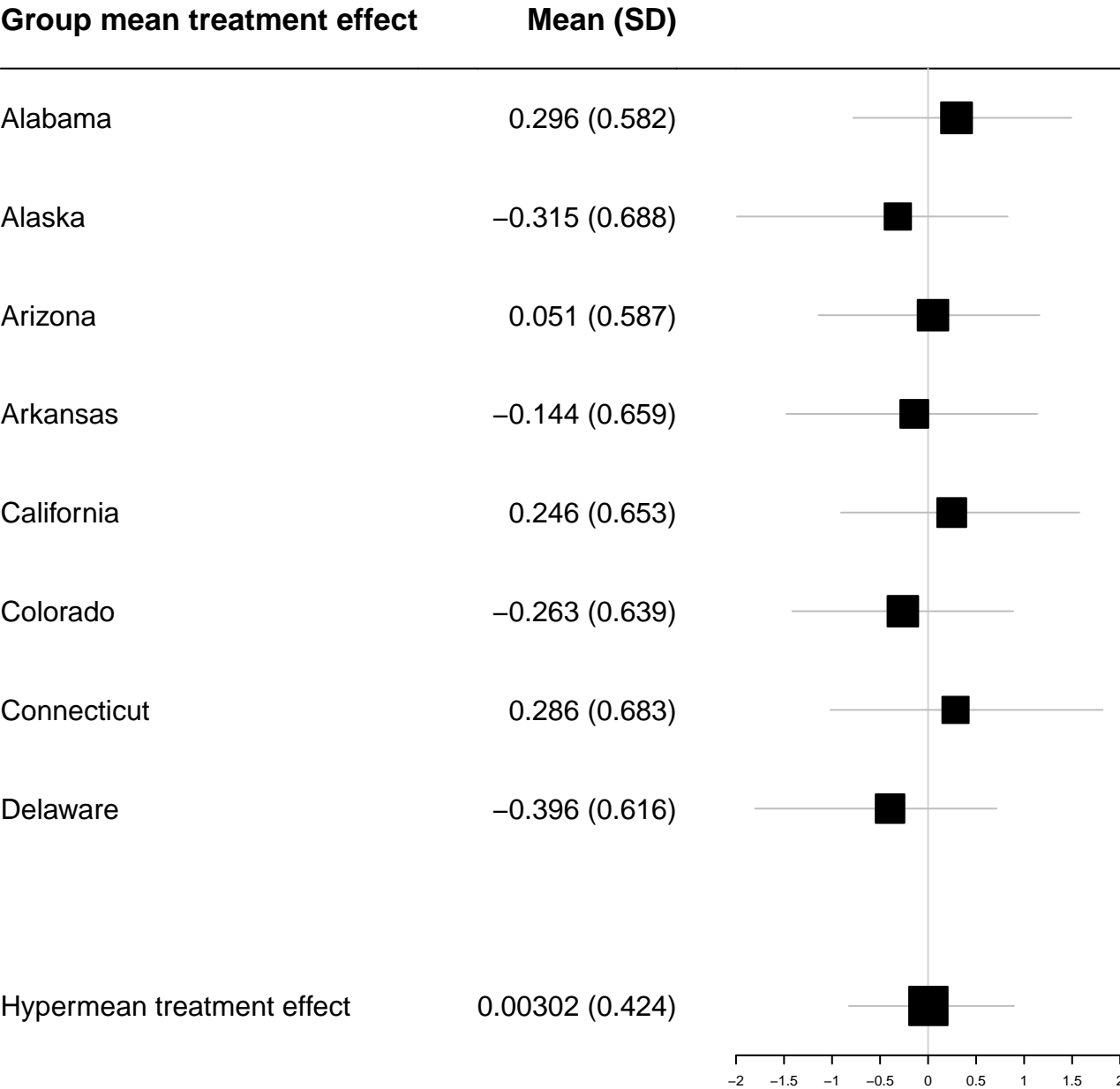


Group mean treatment effect

Mean (SD)







● Input ■ Estimate

Group mean treatment effect

Mean (SD)

Alabama

0.296 (0.582)

Alaska

-0.315 (0.688)

Arizona

0.051 (0.587)

Arkansas

-0.144 (0.659)

California

0.246 (0.653)

Colorado

-0.263 (0.639)

Connecticut

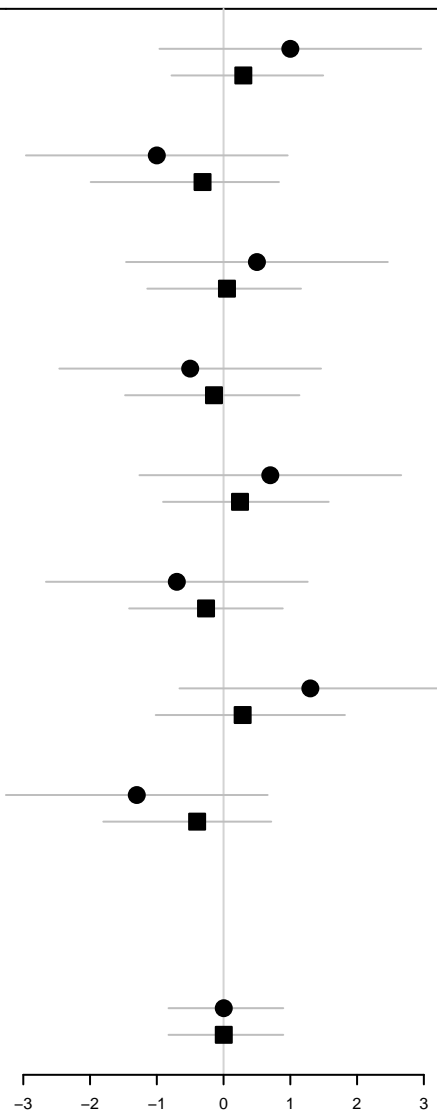
0.286 (0.683)

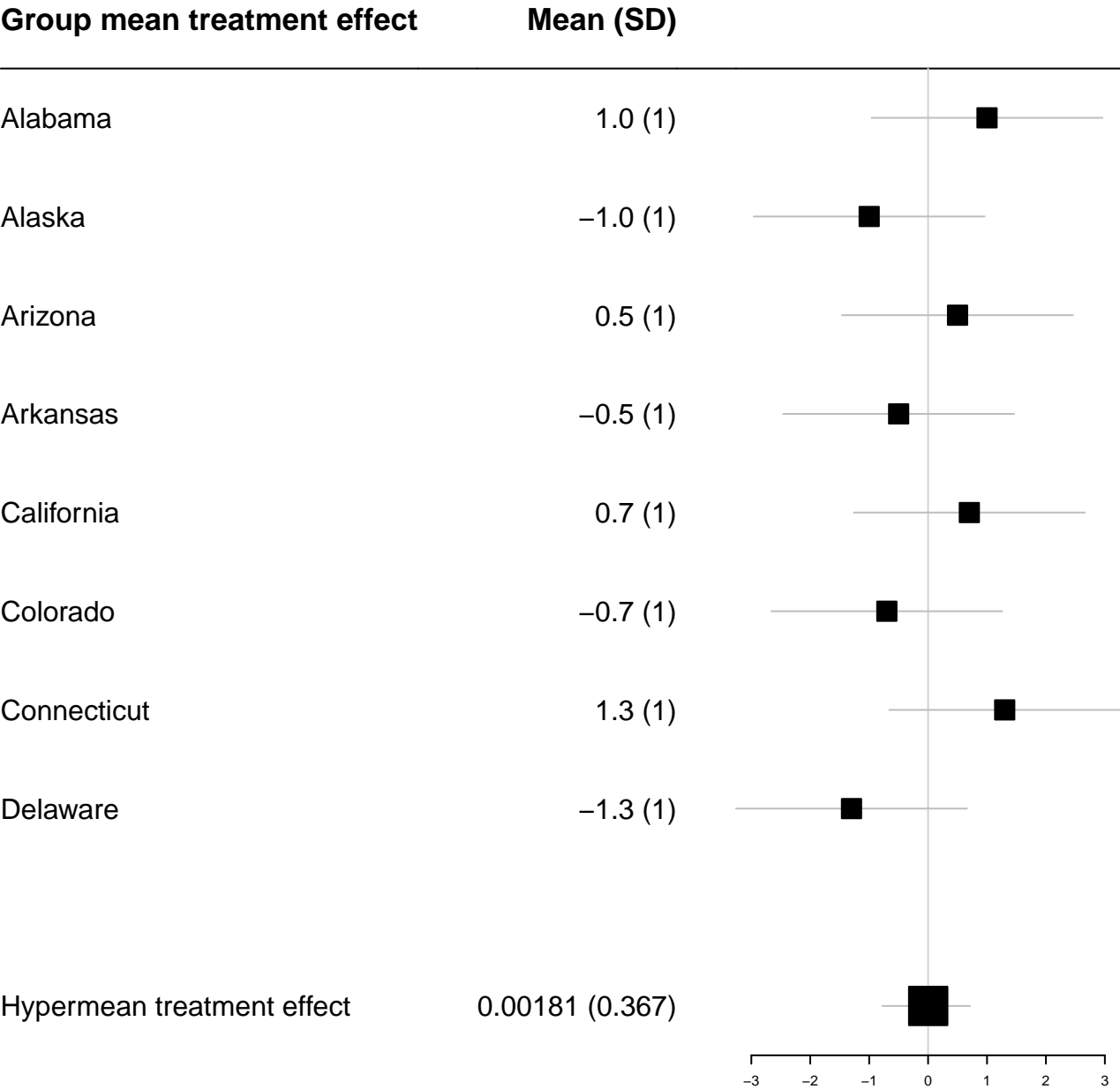
Delaware

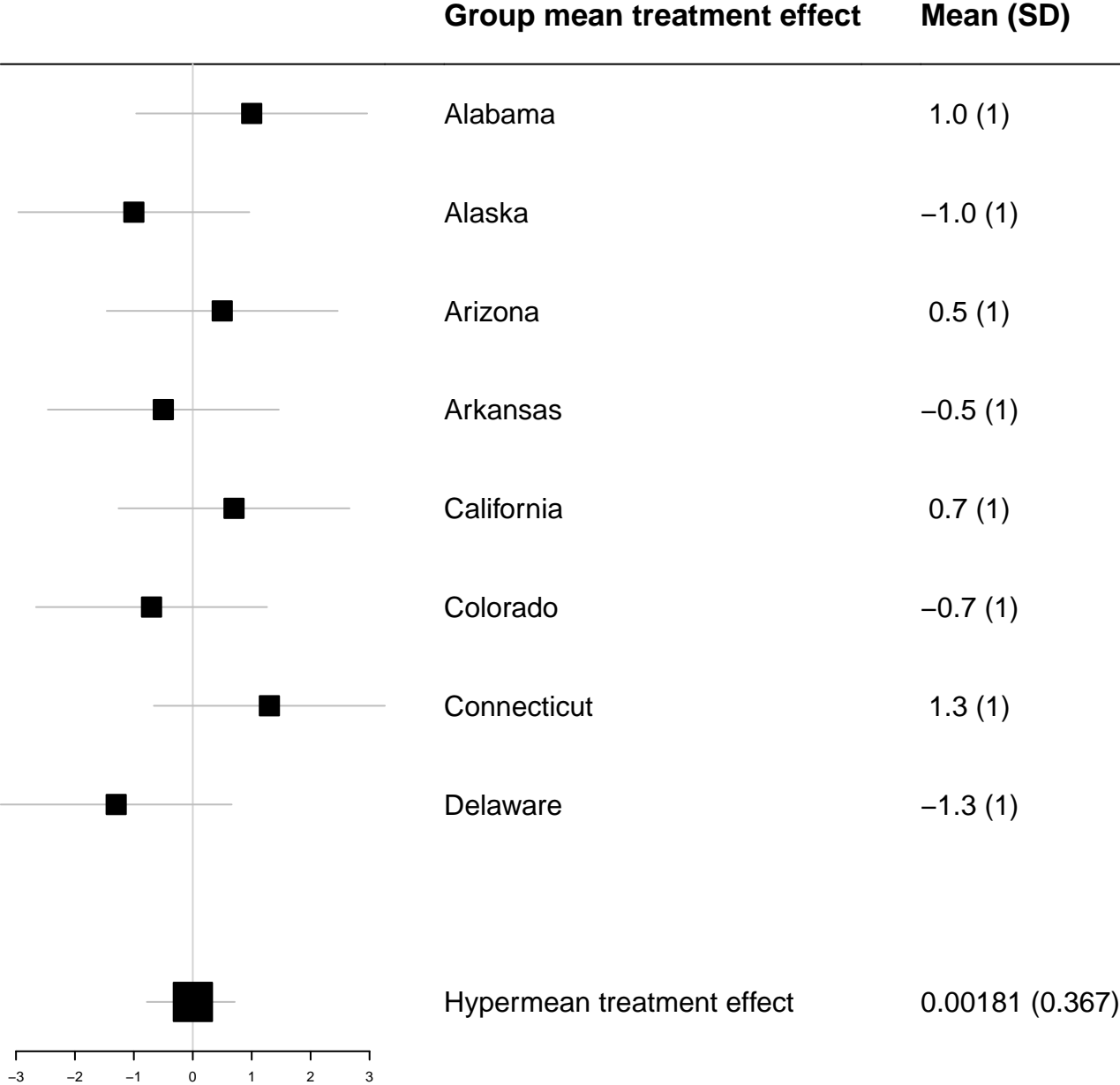
-0.396 (0.616)

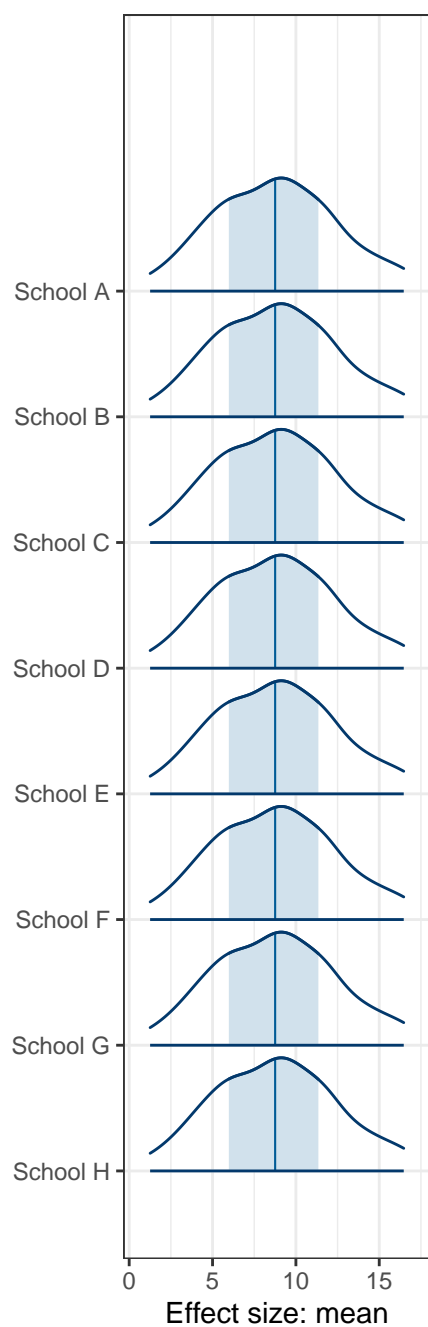
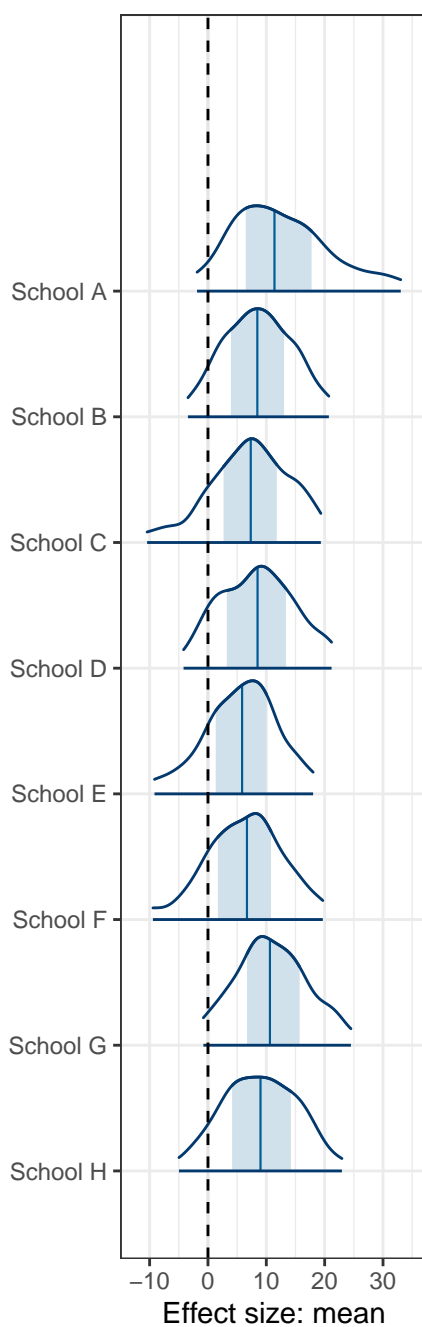
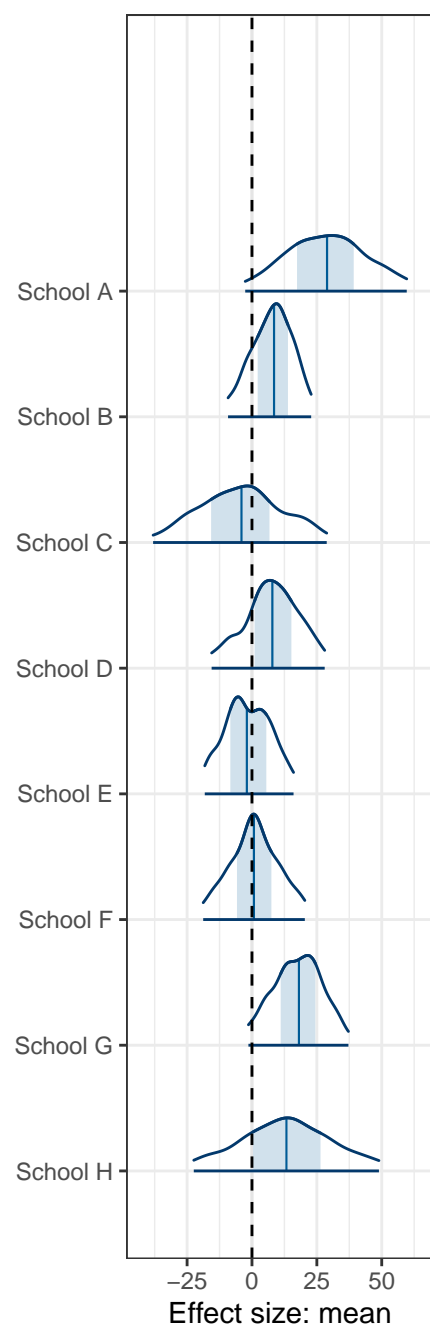
Hypermean treatment effect

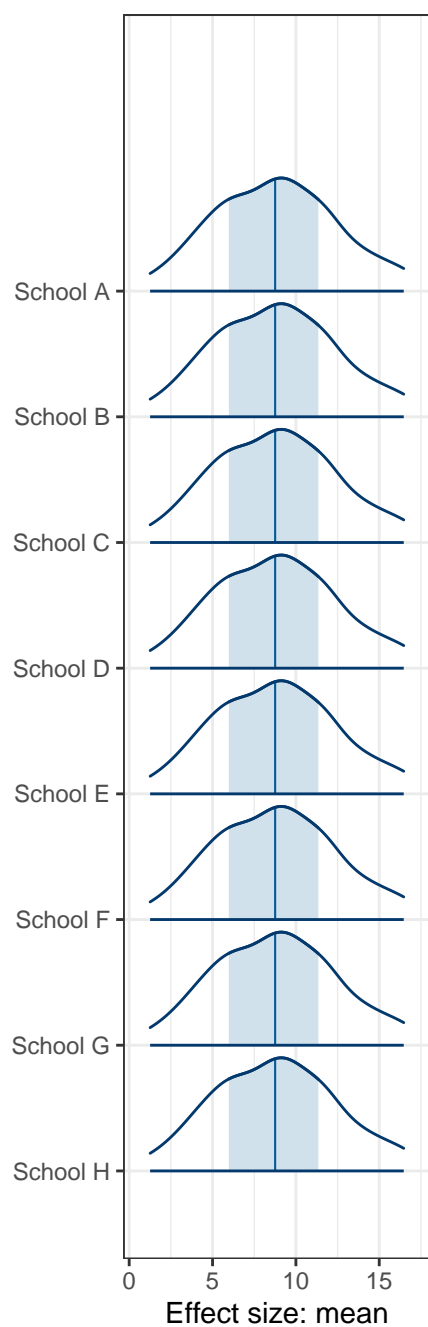
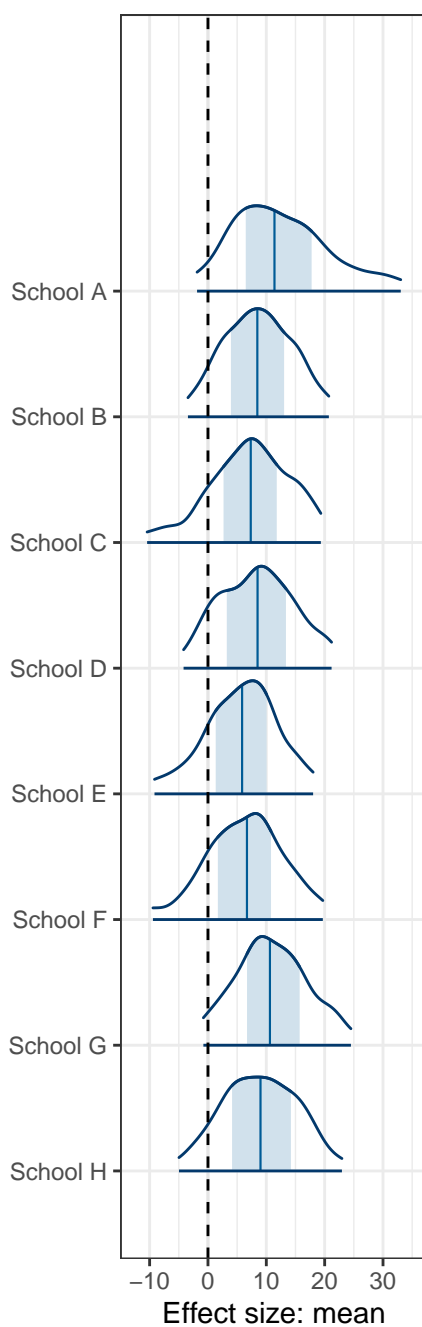
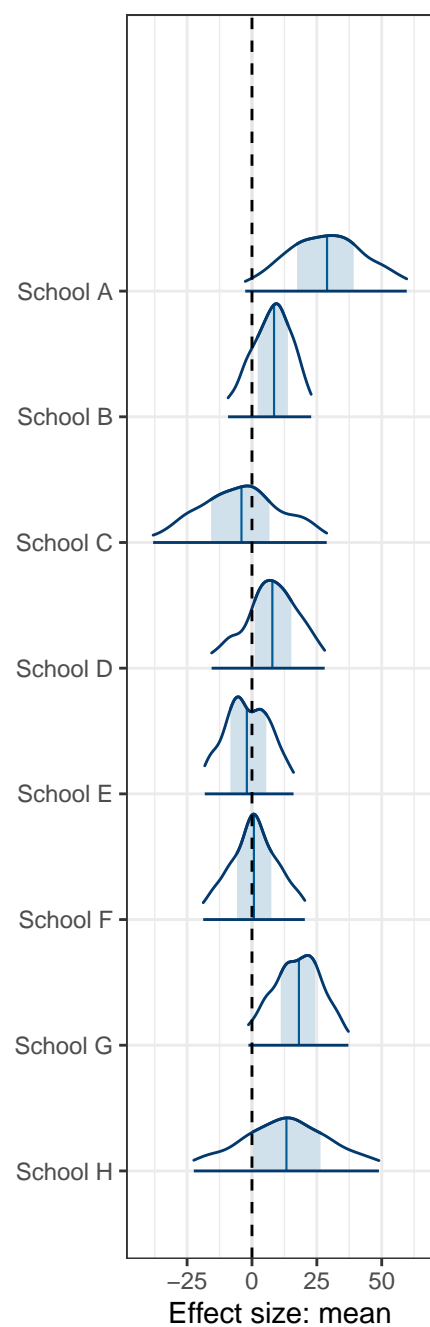
0.00302 (0.424)





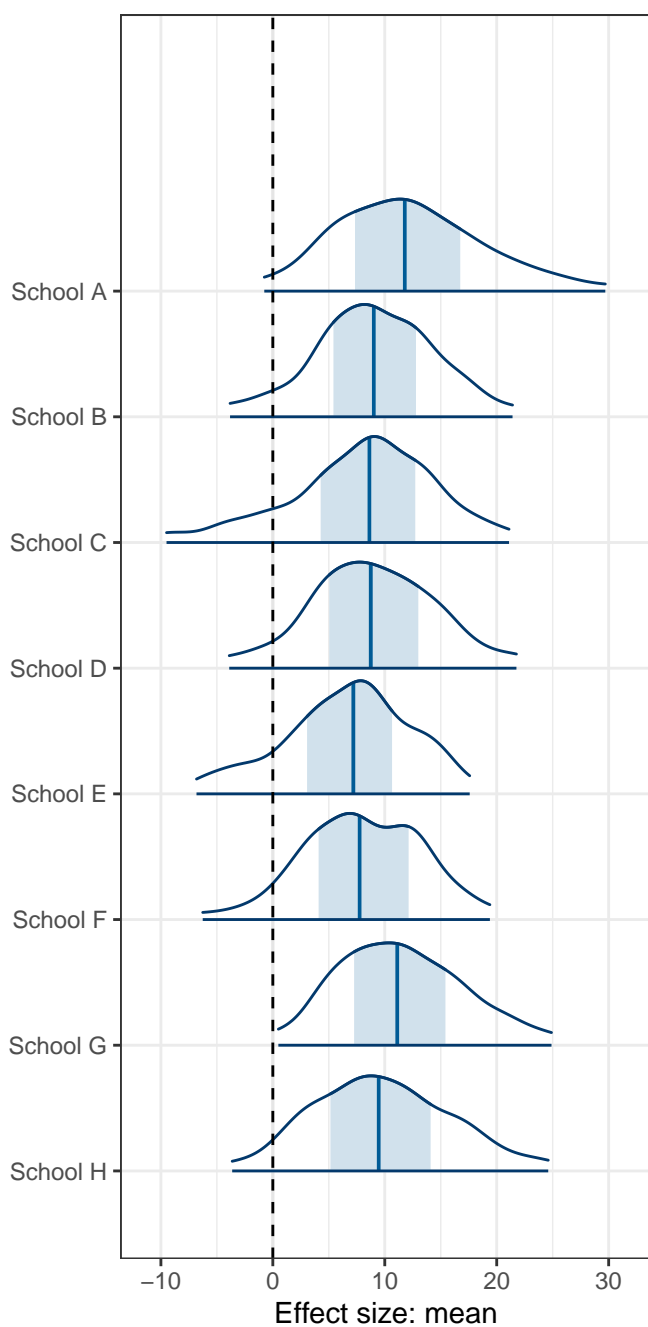
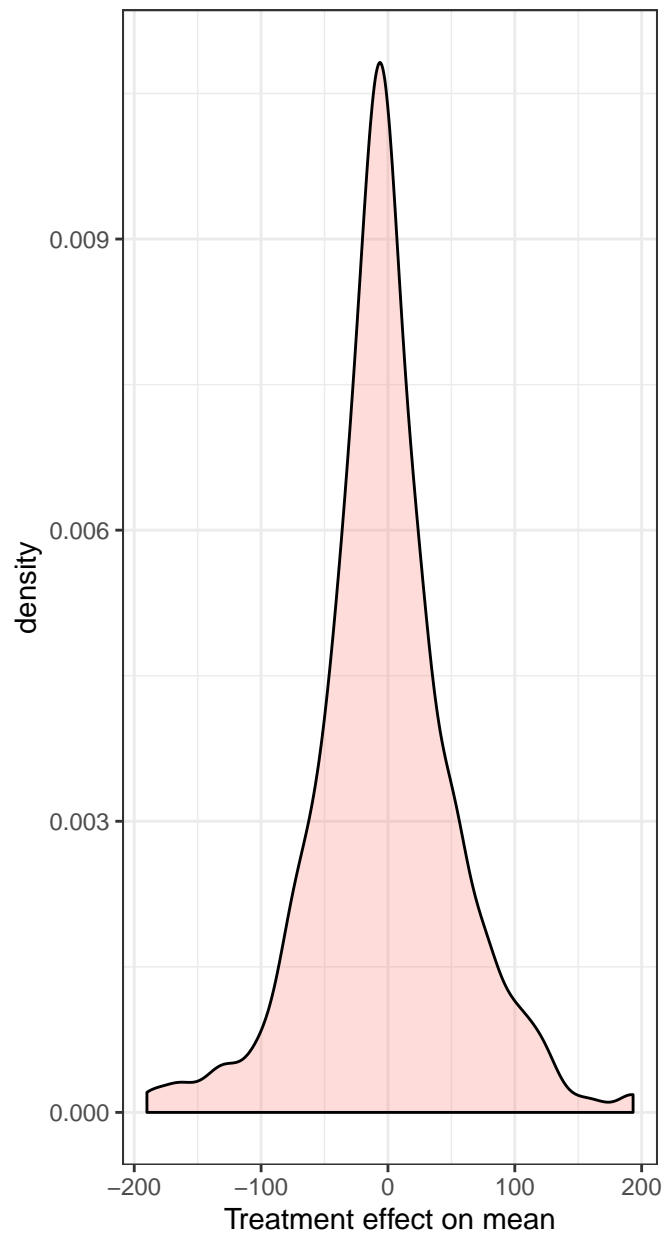






# Prior distribution for possible treatment effects

No data, only sampling from prior



# Prior distribution for possible treatment effects

No data, only sampling from prior

